

The otolith sampling of PBF caught by Taiwanese small-scale tuna longline vessels

Zhong-Yo Chen

Overseas Fisheries Development Council

Introduction

For the purpose of conservation and management of Pacific bluefin tuna resource and well collection of catch data, Fisheries Agency has imposed a Catch Documentation Scheme (CDS) since March 2010. Once Pacific bluefin tuna was caught, fisher shall attach a tag issued by Fisheries Agency to each Pacific bluefin tuna, record the number and individual weight of Pacific bluefin tuna. The record shall be reported to Fisheries Agency on a daily basis. When the catch of Pacific bluefin tuna is landing, Fisheries Agency would dispatch its staffs to fishing ports to measure individual weight and length. In addition, the staffs of Fisheries Agency started to collect the otolith samples since 2011, the coverage rate was expected to reach around 20%.

Sampling procedure

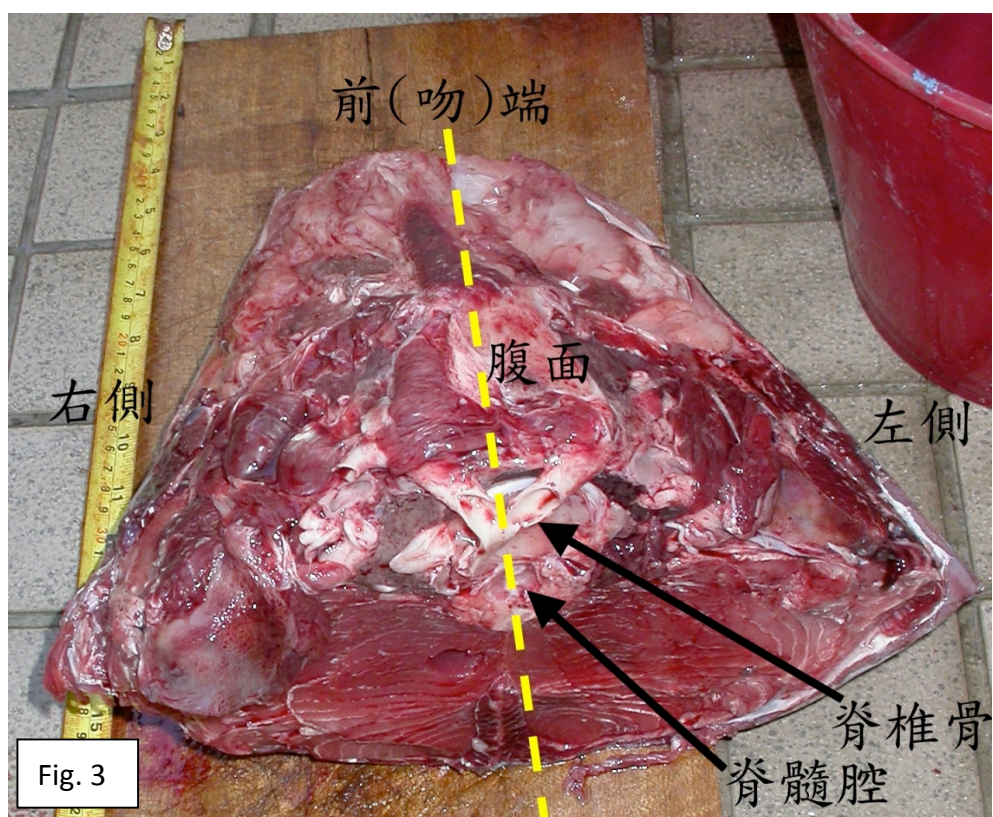
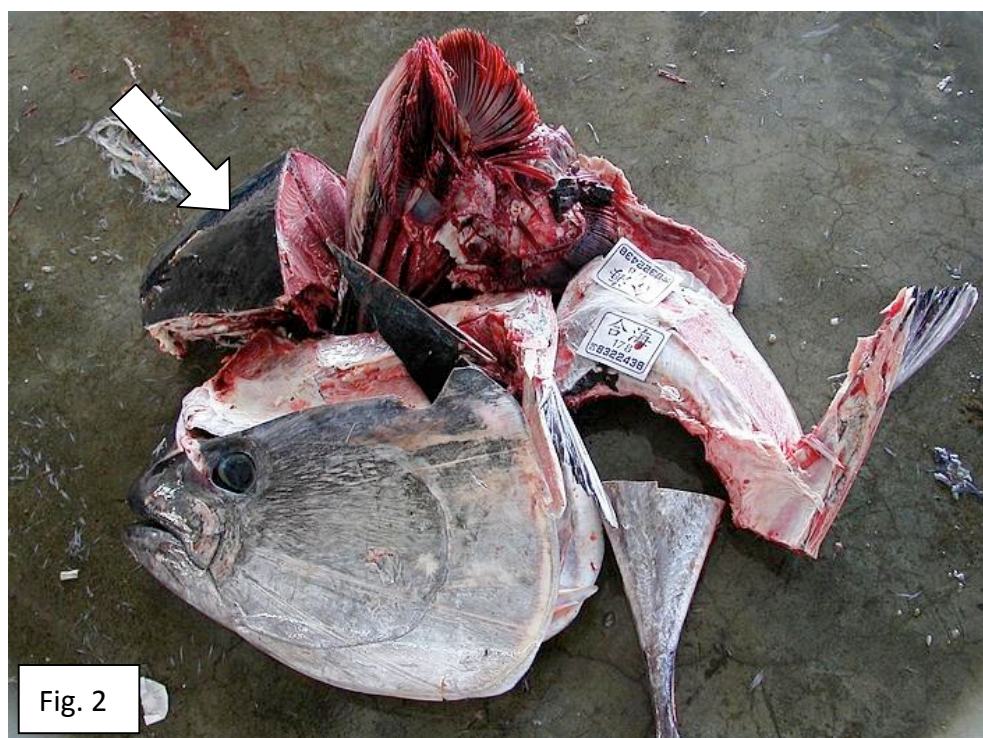
Step 1: contact with the PBF buyers

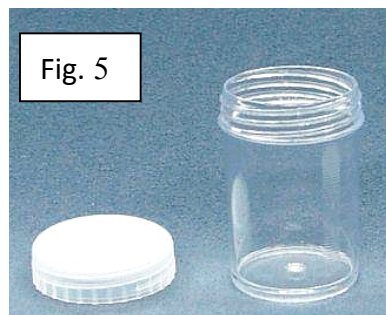
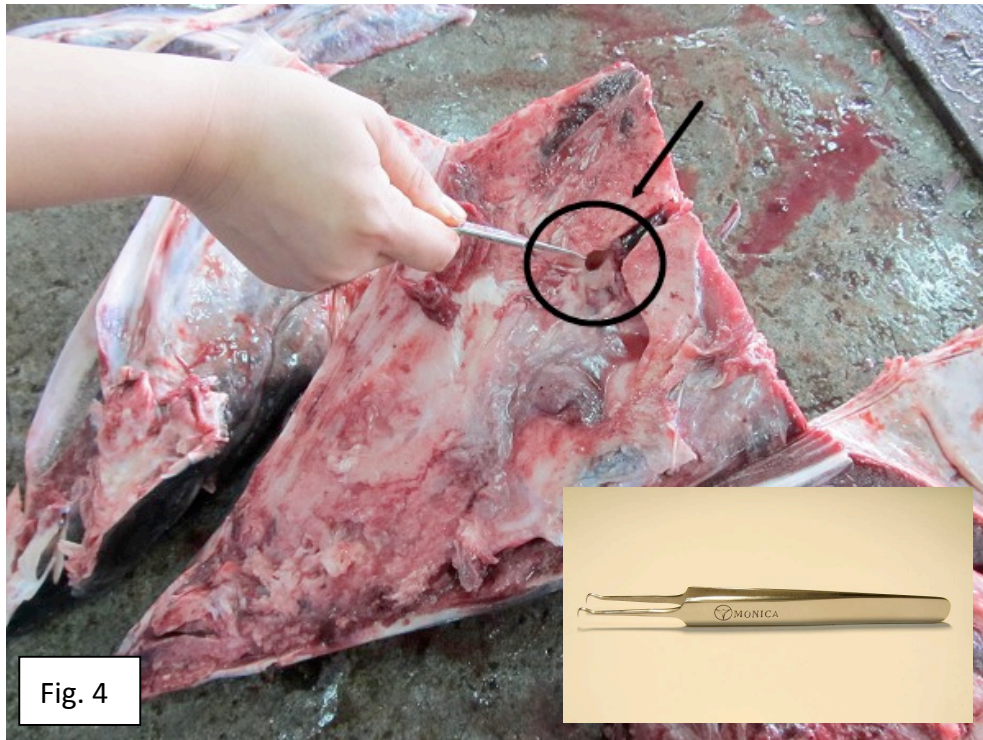
Step 2: confirm the CDS code on the tag



Fig. 1

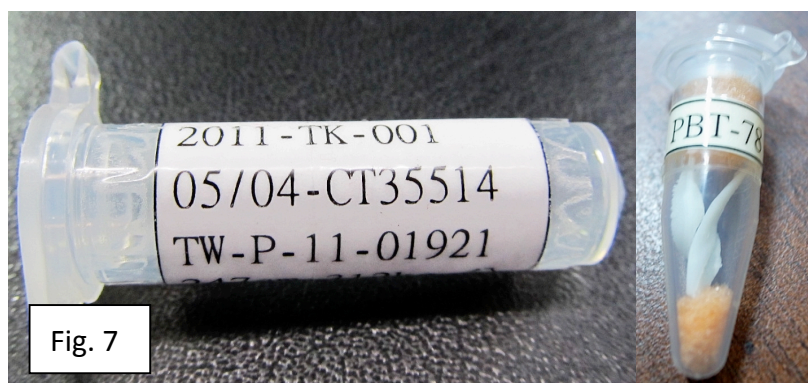
Step 3: cut apart the head → take the otoliths → deposit the otoliths into the jar





Step 4: clean the otoliths → air dry
 → deposit into a tube with CDS code & information





Step 5: register the CDS code and information