

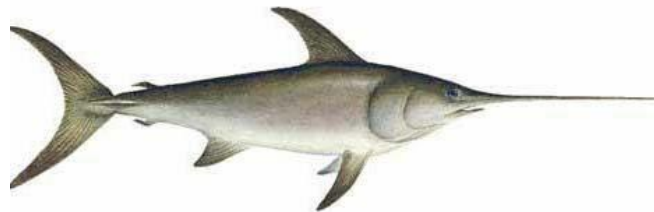
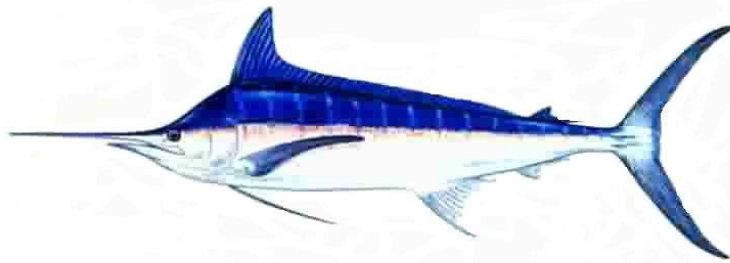


U.S. Swordfish Fisheries in the North Pacific Ocean*

Russell Ito¹ and Jon John Childers²

¹ NOAA Pacific Islands Fisheries Science Center
Honolulu, HI 96822, USA

² NOAA Southwest Fisheries Science Center
La Jolla, California 92038 U.S.A.



*Working document submitted to the ISC Billfish Working Group Workshop, 11-19 February 2014, Honolulu, Hawaii, USA. Document not to be cited without author's written permission.

U.S. SWORDFISH FISHERIES IN THE NORTH PACIFIC OCEAN

Russell Y. Ito
Pacific Islands Fisheries Science Center
National Marine Fisheries Service, NOAA
Honolulu, Hawaii 96822 U.S.A.

and

John Childers
Southwest Fisheries Science Center
National Marine Fisheries Service, NOAA
La Jolla, California 92038 U.S.A.

INTRODUCTION

The United States is a major harvesting and consuming nation for swordfish (*Xiphias gladius*). U.S. fisheries in the Atlantic Ocean, Gulf of Mexico, and Pacific Ocean harvested 4,061 metric tons (mt) in 2012 (NMFS, OST, Fisheries Statistics and Economics Division, 2013). Of this total, 1,528 mt (38%) were taken by the U.S. fisheries for swordfish in the North Pacific Ocean. This report summarizes historical trends and recent developments for these fisheries.

1. FISHERIES AND CATCHES

U.S. swordfish fisheries in the North Pacific Ocean can be categorized by the gear types employed (harpoon and drift gill net, and longline). Harpoon fishing for swordfish in California is the oldest of the three, dating back to the early 1900's (Coan et al., 1998). This fishery primarily supplied the local market for swordfish until the late 1970s. Harpoon landings reached 1,699 mt in 1978, subsided to a more typical level the following year, and remained at relatively low levels thereafter (Fig. 1). The California drift gill net fishery began in 1980, and expanded so rapidly that it became the largest U.S. swordfish fishery in the North Pacific Ocean after only one year. These landings peaked at 2,990 mt in 1985 but then decreased in the following years. Swordfish-directed longlining in Hawaii began in 1988. It expanded rapidly to become the largest U.S. fishery in the Pacific Ocean for swordfish by 1990 with landings peaking at 5,936 mt in 1993. Many of the Hawaii-based vessels migrated to California during 2001-2004 then moved back to Hawaii in 2004 and 2005 due to regulatory changes. Some of these vessels continue to migrate between states according to fishing conditions.

California Harpoon Fishery

The California harpoon fishery targeting swordfish began in the early 1900s, with landings recorded since 1918. Participation in the harpoon fishery was highest up through the mid-1980s and decreased slowly thereafter. There were only 9 vessels fishing in 2012, down from 17 vessels in 2011.

The fishing area typically ranges from San Diego to San Francisco but sometimes extends as far north as Oregon (Coan et al., 1998). Most fishing effort occurs within 200 miles of shore. The fishery usually begins in April or May in waters off San Diego, peaks in July or August, and ends in December in waters off San Francisco.

Harpoon landings of swordfish varied substantially up through the mid-1980s, peaking at 1,699 mt in 1978. Swordfish landings by the California harpoon fishery declined in subsequent years with a catch of only 5 mt in 2012 (Table 1).

Harpoon catch-per-unit-effort (CPUE) is calculated from logbook data and measured as number of fish per day. One important factor in the harpoon fishery is the use (or lack thereof) of spotter aircraft. Swordfish CPUE for vessels using spotter aircraft was about four times that of vessels that did not. Aircraft were not used from 1978 through 1983 (Coan et al., 1998). The trends for swordfish CPUE with and without aircraft assistance were similar, with a high degree of variability and no clear decline or increase. The most recent data on harpoon swordfish CPUE are for 2012. Harpoon swordfish CPUE for vessels with aircraft was 0.38 while CPUE for operations without aircraft assistance was 0.16.

California Drift Gill Net Fishery

The California drift gill net fishery began in the late 1970s. Swordfish, common thresher shark (*Alopias vulpinus*) and shortfin mako shark (*Isurus oxyrinchus*) are targeted species (Hanan et al., 1993). Swordfish catch by this fishery was initially low, but increased in the early 1980s when regulations were changed to allow for greater landings of swordfish. The number of active drift gill net vessels peaked at 220 during 1985-1986 (the season extends from April of one year to March of the following year), but then decreased gradually to 34 vessels during 2003-2004 season. Drift gill net vessel participation remained steady through 2009-2010 but decreased to a record low 17 vessels in 2011-2012 (Fig. 4).

Drift gill net fishing effort is concentrated in the Southern California Bight (waters from Point Conception to Mexico), but can extend past San Francisco to Oregon. The fishing effort occurs within 200 mile U.S. EEZ. The drift gill net fishery begins in May and lasts about 10 months with peak swordfish catches in October and November.

Swordfish landings by the drift gill net fishery grew from 160 mt in 1980 and peaked at 2,990 mt in 1985. Since then, swordfish catches have fluctuated on a decreasing trend to a record low 61 mt in 2010 with catches at 97 mt in 2012 (Table 1).

Hawaii-based Longline Fishery

The fishing vessel *Magic Dragon* came to Hawaii and introduced swordfish longline techniques from Florida in 1988 (Ito et al., 1998). This segment of the longline fishery eventually grew and established Hawaii as a major domestic producer of swordfish. The number of Hawaii-based longline vessels increased rapidly from 37 vessels in 1987 to 141 vessels in 1991 as U.S. longliners from the Gulf of Mexico and the Atlantic swordfish fisheries joined the Hawaii-based longline fishery (Fig. 5). A federal moratorium was implemented in 1991 to limit the number of longline permits at 167 in light of this rapid expansion. Vessel participation never reached the limit. The moratorium on permits was replaced with a limited entry program in 1994 which capped participation in Hawaii's longline fishery at 164 vessels. Vessel activity ranged from 100 to 129 vessels up through 2005, with 129 active longline vessels in 2012. Although the shallow-set longline fishery for swordfish in Hawaii was reopened in March 2004, 2005 was the first complete year this fishery operated under the new guidelines. Eighteen Hawaii-based longline vessels set their gear shallow to target swordfish in 2012, down from 20 in 2011.

The Hawaii-based longline fishery for swordfish, which was heavily regulated in 1999-2001 and prohibited from 2002 through early 2004 due to sea turtle interactions. It reopened in April 2004 under new regulations promulgated by NOAA Fisheries. The new regulations were enacted to minimize interactions between longline gear and sea turtles included a limit of 2,120 shallow sets per year, use of transferable shallow-set certificates (one certificate per set) by eligible Hawaii longline limited access permit holders, a requirement to notify NOAA Fisheries of an intent to deploy shallow sets before any such trips, a requirement that the vessel operator make shallow sets throughout the entire trip, carry an observer, use circle hooks, use mackerel or mackerel-type bait, begin setting operations one hour after sunset, and carry a dehooking device and large dip nets to bring hooked turtles on board gently. They established annual limits on the numbers of interactions between longline gear and leatherback (*Dermochelys coriacea*) and loggerhead (*Caretta caretta*) sea turtles with mandatory fishery closures when either limit is reached, (16 and 17, respectively). An annual effort limit of 2,120 shallow sets was also implemented but this limit was removed in 2009. The sea turtle interaction limits were revised from 16 to 26 for leatherback turtles and from 17 to 34 for loggerhead turtles by NMFS on November 5, 2012. Though restrictions on shallow-set longline fishing decreased, the effort in this sector of the longline fishery has decreased.

The Hawaii-based longline fishery ranged from the equator to 45° N latitude and from 125° to 175°W longitude in 2012. The total range since 1991 extended from the equator to 50° N latitude and from 130° W to 175° E longitude. Effort by the Hawaii-based longline fishery has

been on an increasing trend with a record 45.6 million hooks set in 2012. The shallow-set longline fishery, which typically operates in latitudes north of the Hawaiian Islands on the high seas accounted for 3% of the total effort. Shallow-set longline effort for swordfish was typically highest during the first half of the year and the area with the highest swordfish catches were between 30° and 35° N latitude (Figure 6).

Swordfish landing statistics for the California-based longline fishery during 2005-2012 were confidential because there was only one active vessel. Therefore, Hawaii- and California - based longline swordfish landings in the North Pacific Ocean were combined (Table 1). The preliminary estimate of 2012 U.S. swordfish longline landings in the North Pacific Ocean was 1,418 mt, down 13% from the previous year. The shallow-set longline fishery for swordfish was affected by the sea turtle interaction limit in 2006 when this segment of the fleet reached the loggerhead sea turtle interaction limit in March and was closed for the remainder of the year. The shallow-set longline fishery also reached the leatherback sea turtle interaction limit in November 2011 and was closed for the remainder of that year as well. Sea turtle interactions were well below the allowable limits with only 7 leatherback and 6 loggerhead interactions in 2012.

Swordfish CPUE (number of fish per 1,000 hooks) varies substantially according to targeting practice (Fig. 7). Swordfish CPUE for trips that specifically set their gear shallow to targeted swordfish ranged from 9.3 fish in 2010 to 19.1 fish in 2006. The average swordfish CPUE under the conditions of the pre-litigation period (1991-2001) was 13.8. The shallow-set swordfish fishery was reopened in March 2004. There was a low level of shallow-set effort in the fourth quarter of that year but those who first tried fishing under the new regulations were able to achieve a swordfish CPUE of 12.7. The first complete year in which the Hawaii-based longline fishery operated under the new set of regulations was 2005; vessel operators reported a CPUE of 15.5 on shallow-sets during that year. Shallow-set swordfish CPUE reached a record 19.1 in 2006 because that sector of the Hawaii-based longline fishery was closed after the peak of the swordfish season due it reaching the limit on loggerhead sea turtle interactions. Swordfish then declined to record low of 9.3 in 2010 and remained stable in the subsequent two years with CPUE at 9.8 in 2012. The average swordfish CPUE under the conditions of the post-litigation period (2004-2012) was 13.0. Shallow-sets had their highest CPUE during the first quarter and lowest CPUE in the third (Figure 8a). Deep-sets had negligible swordfish catch rates and had relatively low mean annual CPUE of 0.1 and remained unchanged over the past 12 years. Deep sets swordfish mean quarterly CPUE was lowest in the first quarter and highest in the second quarter. at 0.2 (Figure 8b).

The mean weight for shallow-set caught swordfish was larger than deep-set caught swordfish by 10 kgs in 2012. Shallow-set longline fishing for swordfish had a higher proportion of larger fish than deep-set swordfish. The weight-frequency histograms for shallow-set and

deep-set swordfish both had a dominant mode at the 21-30 kg interval (Figures 9a & 9b), and the shallow-set swordfish had secondary mode at the 71-80 kg interval.

California-based Longline Fishery

The California-based longline fishery began in 1991 when three vessels based in San Pedro fished waters outside the U.S. EEZ (Vojkovich and Barsky, 1998). The longline fleet increased more than 10-fold from 3 in 1991 to 31 vessels in 1994. Participation in the California-based longline fishery peaked at 44 vessels in 2000 (Fig. 10). The California-based longline fleet consisted primarily of vessels that had targeted swordfish in Hawaii, but migrated to California in reaction to the turtle interaction lawsuit in 2000. Almost all of those vessels returned to Hawaii in 2004 when the shallow set longline fishery in California was closed and longline vessel operators were only allowed to set their gear deep. The California longline fishery has since decreased to only a single vessel targeting tunas during 2005-2012 although federally permitted Hawaii longline vessels are allowed to unload their catch in California

California does not allow pelagic longline fishing within the EEZ; therefore, the California-based longline fishery operated exclusively on the high seas. When this fishery first began, effort typically peaked late in the year and the fleet began fishing closer to Hawaii. Shallow-set longline fishing targeting swordfish out of California was prohibited in 2004.

Swordfish landings by the California-based longline fishery increased from negligible levels in the early 1980s to a peak in 2000. The California-based longline fishery was the largest U.S. swordfish fishery in the North Pacific Ocean from 2001 to 2004. The single California-based longline vessel employed deep-set tuna target gear and had only small incidental catches of swordfish during the past three years.

California-based longline CPUE (number of fish per 1000 hooks) for swordfish varied from 6.3 in 1995 to 25.3 in 2004 (Fig. 11), the most recent year for which swordfish CPUE data are available.

2. DATA SOURCES

Hawaii

Federal longline logbooks have been mandatory for Hawaii-based longline vessels since November 1990. The Federal longline logbook data provide detailed information among the various data sets for the Hawaii-based longline fishery. Logbooks must be maintained by vessel operators and submitted after each trip. Data recorded in the logbooks include: vessel, date, fishing location, effort and gear configuration, catches by species, and interactions with protected species. Coverage of the Federal longline logbook data is estimated to be very close to 100%.

From 1987-2000, market data on longline landings were collected at the Honolulu fish auction by the NMFS. Individual fish weights were obtained from 25%- 90% of fish landed by the Hawaii-based longline fishery and recorded to the nearest half pound. Weights were raised to an estimated whole weight when processing or damage was observed. Sex of fish was not available as most swordfish were landed in processed form (headed, finned, and gutted). The responsibility for collecting market data was transferred to the State of Hawaii, Division Aquatic Resources (DAR) in 2002. Coverage of the DAR market data is estimated to be in excess of 95%.

The HDAR required longline fishermen to submit Longline Trip Report data which included information that included vessel and fishing license number, start and end dates for the trip, one entry for area fished, species, number and pounds caught, pounds sold and total value. However the DAR Longline Trip Report data did not include operational data such as area fished, number of sets, and hooks set. DAR discontinued collecting longline data after the implementation of the federal longline logbook program in 1991.

Data collection by at-sea observers was initiated in 1990 when Hawaii-based longline vessels volunteered to take observers aboard to investigate longline fishery interactions with Hawaiian monk seals (*Monachus schauinslandi*) (Dollar, 1991). A mandatory observer program began in February 1994 (Dollar, 1994) using statistical guidelines to improve the estimates of incidental takes of sea turtles (Dinardo, 1993). Observers covered about 5% of the total longline trips from 1994-1999. Observer coverage was then increased in response to new regulations and has remained at or above 20% for the deep-set tuna sector of the Hawaii-based longline fishery from the latter part of 2000 through 2012. Beginning in 2004, observer coverage on shallow-set trips targeting swordfish was 100%. The observer data are similar to logbooks, although more detailed. The primary purpose for the data collected by the observer program is to assess the fleet-wide impact of longlining on protected and endangered species but the data are also used for stock assessments purposes.

California

There are four types of data on the California-based longline fishery: CDFG landing receipts; CDFG and Federal daily longline logbooks; dockside sampling of swordfish landings collected by the CDFG; and data collected at sea by NMFS observers. Landing receipts have been collected by the CDFG since the start of the fishery in 1991. Daily longline logbook data were first collected by the CDFG on a voluntary basis from 1993 to 1994. Collecting and submitting CDFG longline logbook data (Pacific Offshore) became mandatory in 1995. This system was replaced in 1999 by a NMFS High Seas longline logbook data reporting system in response to Federal requirements under the High Seas Fisheries Compliance Act. Data recorded in the logbooks include: vessel, date, fishing location, effort and gear configuration, numbers of

fish caught by species, and number of interactions with protected species. Collection of size samples from longline-caught swordfish began in 1991 in conjunction with drift gill net swordfish sampling (Childers and Halko, 1994) but was discontinued in 2000. NMFS began placing observers on longline vessels from 2001 to investigate interactions with sea turtles and collect detailed catch and effort data. Some size data are also collected by observers.

The California drift gill net fishery is monitored by use of CDFG landing receipts, vessel logbooks, size sampling, and a CDFG and NMFS observer program. Landing receipts have been collected by the CDFG since the fishery's inception in 1980. Drift gill net fishermen are required to collect logbook data on daily operations and catch. Location is recorded in 10 minute squares. CDFG sampled drift gill net swordfish catch for length at local markets beginning in 1981. An observer program to monitor the drift gill net fishery was initiated and maintained by CDFG from 1980 to 1989 and has continued since 1990 under NMFS. The observer program is used to monitor bycatch, especially of marine mammals. The NMFS observer program also collects size samples of swordfish.

The California harpoon fishery is also monitored through landing receipts, vessel logbook, and size sampling by the CDFG. Landings have been collected since the early 1900s through a landings receipt system. A mandatory vessel logbook system for the harpoon fishery started in 1974. These logbooks are completed daily and record catches by location in the CDFG 10-minute square codes. Information on aircraft assistance, water color, sea surface temperature and condition, harpooning success, and areas searched is also included. Size sampling of swordfish landings began in 1981 in conjunction with the drift gill net sampling. The sampling program was discontinued in 2000.

LITERATURE CITED

Childers, J., and L. Halko

1994. Length-frequency database description: California Department of Fish and Game gill net market samples. Southwest Fish. Sci. Cent. Admin. Rep. LJ-94-01. 46 p.

Coan, A. L., M. Vojkovich, and D. Prescott.

1998. The California harpoon fishery for swordfish (*Xiphias gladius*). In I. Barrett, O. Sosa-Nishizaki and N. Bartoo (eds.). 1998. Biology and fisheries of swordfish, *Xiphias gladius*. Papers from the International Symposium on Pacific Swordfish, Ensenada, Mexico, 11-14 December 1994. U.S. Dept. of Comm., NOAA Tech. Rept. NMFS 142. p 37-48.

DiNardo, G. T.

1993. Statistical Guidelines for a Pilot Observer Program to Estimate Turtle Takes in the Hawaii Longline Fishery. NOAA Technical Memorandum NOAA-TM-NMFS-SWFC-190. 40p.

Dollar, R. A.

1994. Annual report of the 1993 western Pacific longline fishery. Honolulu Lab., Southwest Fish. Cent., Natl. Mar. Fish. Serv., NOAA Honolulu, HI 96822-2396. Southwest Fish. Cent. Admin. Rep. H-94-06. 38 p.

Dollar, R. A.

1991. Summary of swordfish longline observations in Hawaii, July 1990-March 1991. Honolulu Lab., Southwest Fish. Cent., Natl. Mar. Fish. Serv., NOAA Honolulu, HI 96822-2396. Southwest Fish. Cent. Admin. Rep. H-91-09. 13 p.

DOC, NOAA, NMFS, Fisheries Statistics and Economics Division.

2013. Fisheries of the United States, 2006. Current Fishery Statistics No. 2012. Van Voorhees (Chief), and Lowther (Editor). Natl. Mar. Fish. Serv., NOAA, Dept. of Comm. 124p.

Hanan, D. A., D. B. Holts, and A. L. Coan Jr.

1993. The California drift gill net fishery for sharks and swordfish, 1981-82 through 1990-91. Calif. Dept. of Fish and Game, Fish. Bull. 175. 95p.

LITERATURE CITED (continued)

Ito, R. Y., R. A. Dollar, and K. E. Kawamoto.

1998. The Hawaii-based Longline Fishery for swordfish (*Xiphias gladius*). In I. Barrett, O. Sosa-Nishizaki and N. Bartoo (eds.). 1998. Biology and fisheries of swordfish, *Xiphias gladius*. Papers from the International Symposium on Pacific Swordfish, Ensenada, Mexico, 11-14 December 1994. U.S. Dept. of Comm., NOAA Tech. Rept. NMFS 142. p 77-88.

Otsu, T.

1954. Analysis of the Hawaiian long-line fishery, 1948-52. *Comm. Fish. Rev.* 16(9):1-17.

Vojkovich, M. and K. Barsky.

1998. The California-based Longline Fishery for Swordfish, *Xiphias gladius*, beyond the U.S. Exclusive Economic Zone. In I. Barrett, O. Sosa-Nishizaki and N. Bartoo (eds.). 1998. Biology and fisheries of swordfish, *Xiphias gladius*. Papers from the International Symposium on Pacific Swordfish, Ensenada, Mexico, 11-14 December 1994. U.S. Dept. of Comm., NOAA Tech. Rept. NMFS 142. p 147-157.

Table 1.--U.S. North Pacific swordfish landings* (metric tons), 1970-2012.
Dashes indicate no fishery.

Year	Harpoon	Gill net	Other	Longline	North Pacific
1970	612	---	10	5	627
1971	99	---	3	1	103
1972	171	---	4	0	175
1973	399	---	4	0	403
1974	406	---	22	0	428
1975	557	---	13	0	570
1976	42	---	13	0	55
1977	318	---	19	17	354
1978	1,699	---	13	9	1,721
1979	329	---	57	7	393
1980	566	160	62	5	793
1981	267	461	20	3	751
1982	156	911	43	5	1,115
1983	58	1,321	378	5	1,762
1984	96	2,101	678	3	2,878
1985	305	2,990	108	2	3,405
1986	291	2,069	113	2	2,475
1987	235	1,529	35	24	1,823
1988	196	1,376	70	24	1,666
1989	62	1,243	63	218	1,586
1990	64	1,131	48	2,437	3,680
1991	20	944	50	4,535	5,549
1992	75	1,356	48	5,762	7,241
1993	168	1,412	165	5,936	7,681
1994	157	792	28	3,807	4,784
1995	97	771	35	2,981	3,884
1996	81	761	20	2,848	3,710
1997	84	708	18	3,393	4,203
1998	48	931	26	3,681	4,686
1999	81	606	36	4,329	5,052
2000	90	649	33	4,834	5,606
2001	52	375	19	1,969	2,415
2002	90	302	3	1,524	1,919
2003	107	216	21	1,958	2,302
2004	69	182	51	1,185	1,487
2005	77	220	10	1,622	1,929
2006	71	443	9	1,211	1,734
2007	59	490	6	1,735	2,290
2008	48	405	25	2,014	2,492
2009	50	251	5	1,817	2,123
2010	37	61	21	1,676	1,795
2011	24	118	95	1,623	1,860
2012	5	97	8	1,418	1,528

* Based on estimated whole weight.

Figure 1.—Catch by the U.S. swordfish fisheries of the North Pacific Ocean, 1970-2012.

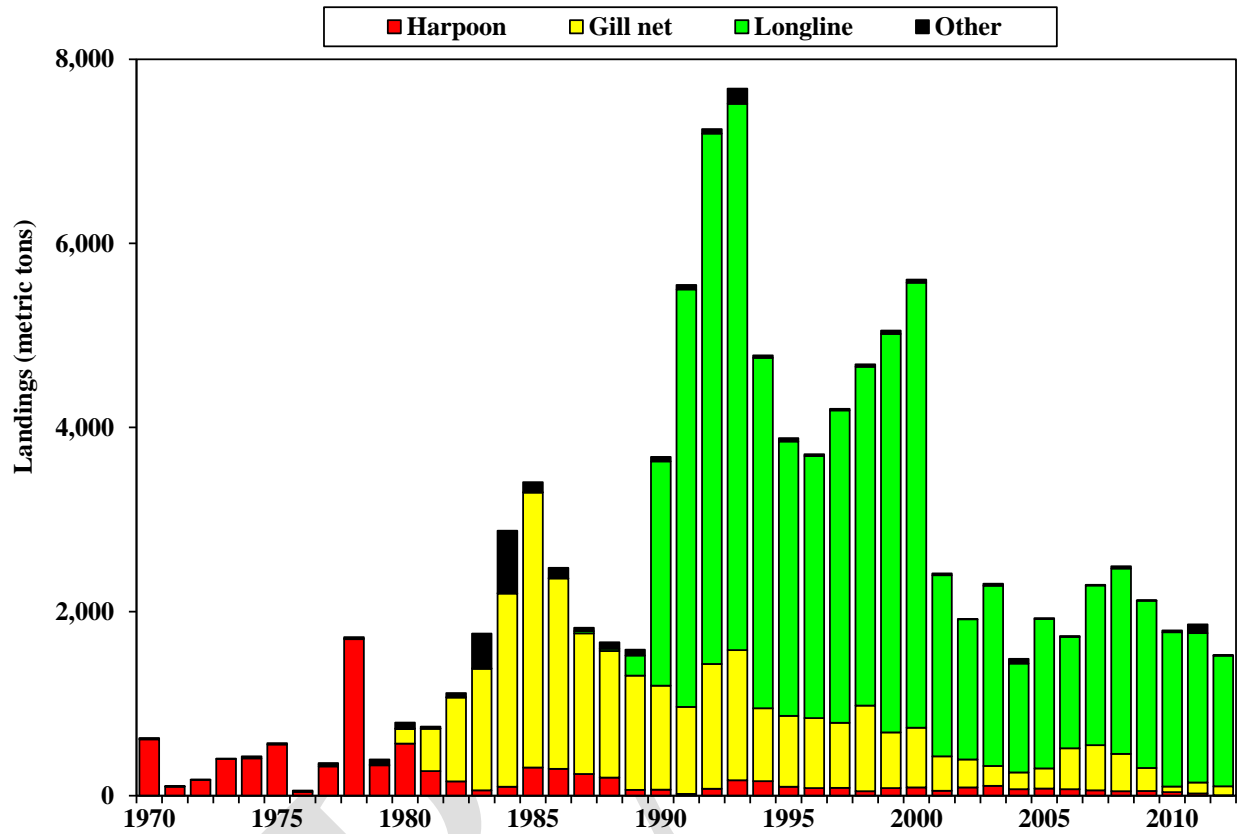


Figure 2.--Number of California harpoon vessels, 1974-2012.

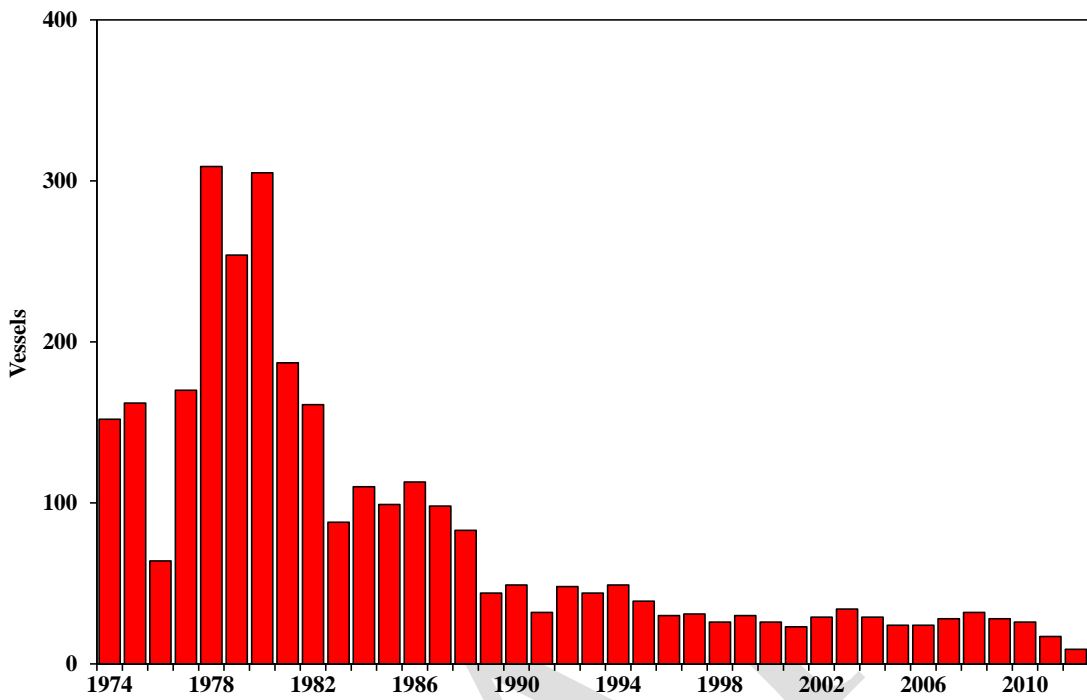


Figure 3.--California harpoon fishery swordfish catch-per-unit-effort (CPUE), 1974-2012.

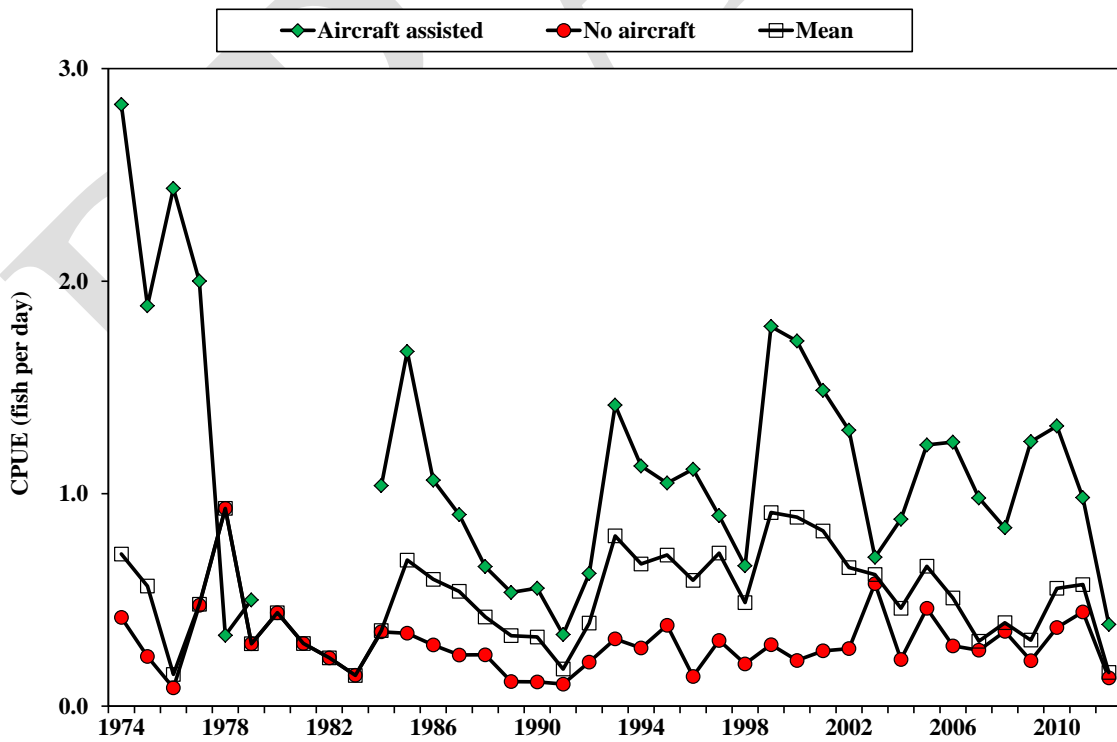


Figure 4.--Number of California drift gill net vessels, 1981-1982 through 2011-2012.

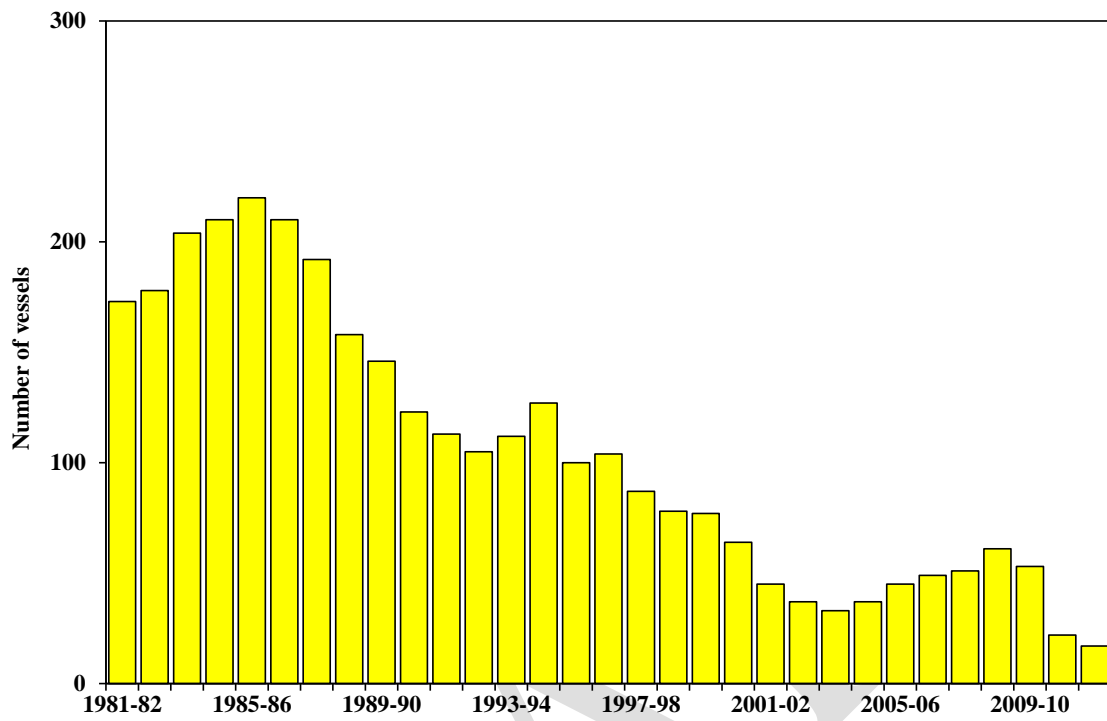


Figure 5.—Number of total active Hawaii-based longline vessels and longline vessels targeting swordfish, 1987-2012.

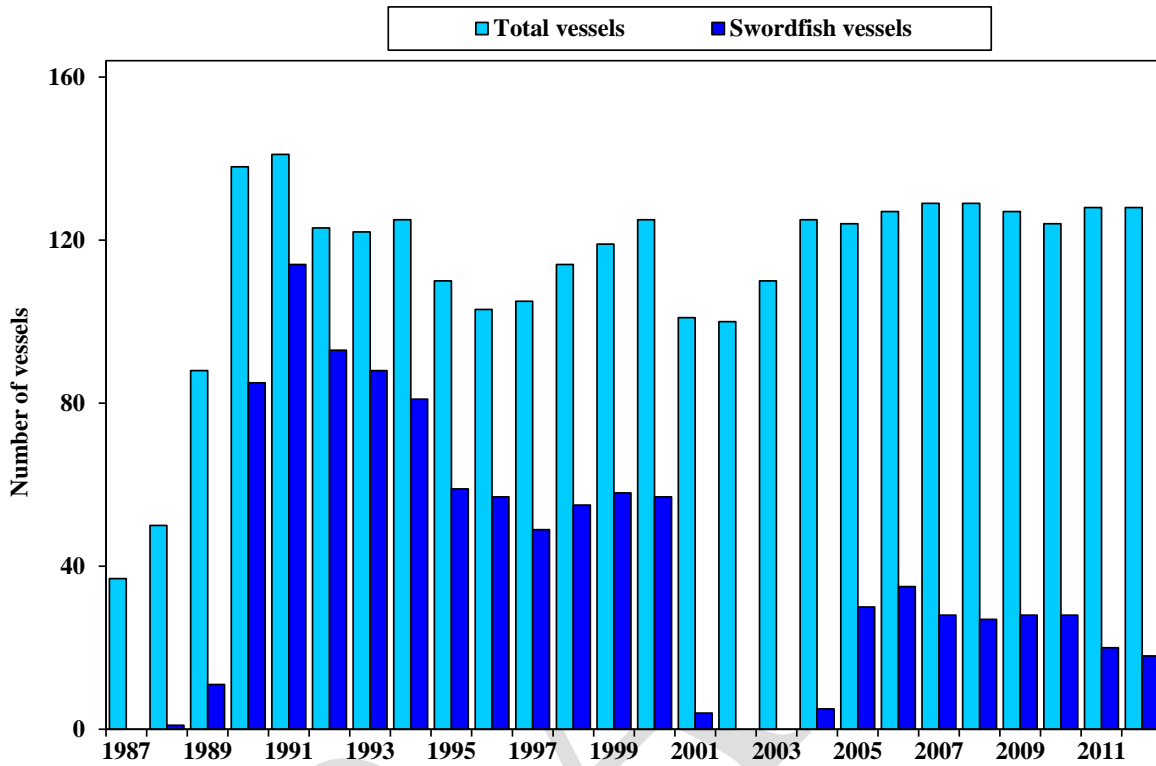
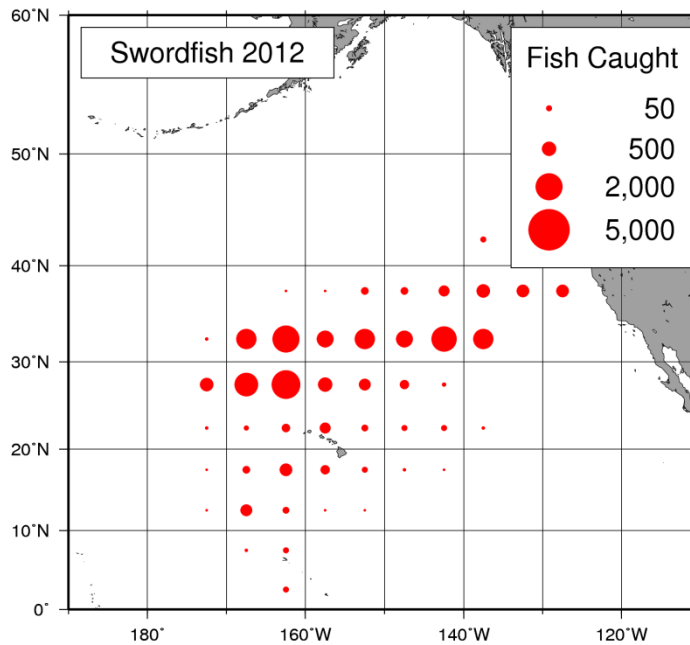


Figure 6.—U.S longline swordfish catch (in numbers) by area, 2012.



NOAA Fisheries/Pacific Islands Fisheries Science Center
 Mercator Projection Scale = 0.0625000000 inches/degree
 Data as of 2013-06-12 gridded 5 deg x 5 deg x year

Figure 7.—Hawaii-based longline catch-per-unit-effort (CPUE) for swordfish by set type, 1991-2012.

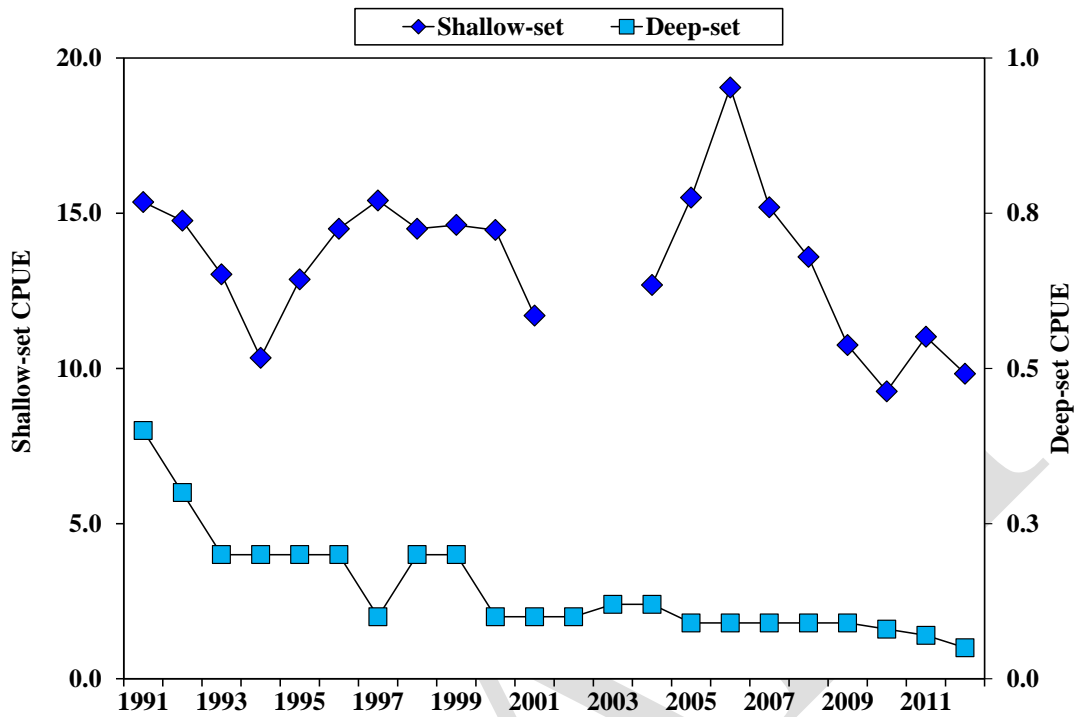


Figure 8a.—Quarterly Hawaii-based longline shallow-set swordfish CPUE, 1991-2012.

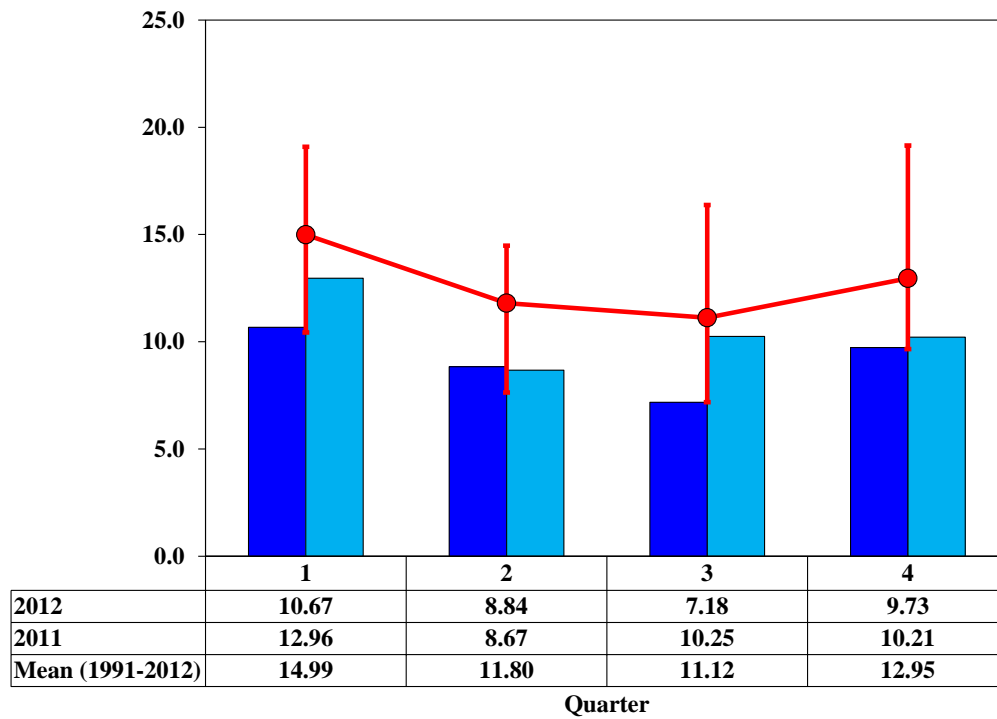


Figure 8b.—Quarterly Hawaii-based longline deep-set swordfish CPUE, 1991-2012.

DRAFT

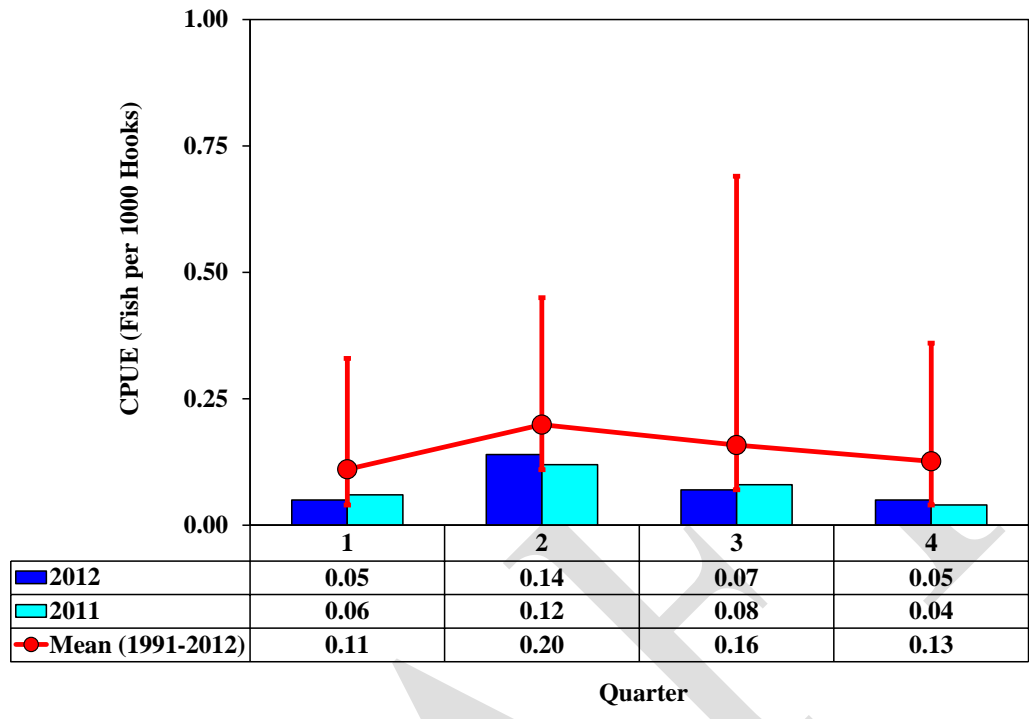


Figure 9a.—Hawaii-based longline shallow-set swordfish weight-frequency, 2012.

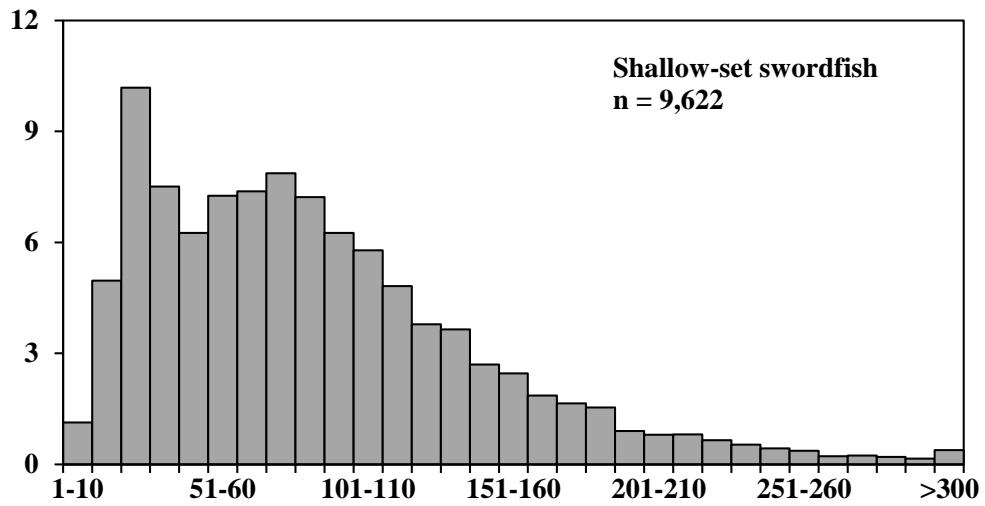


Figure 9b.—Hawaii-based longline deep-set swordfish weight-frequency, 2012.

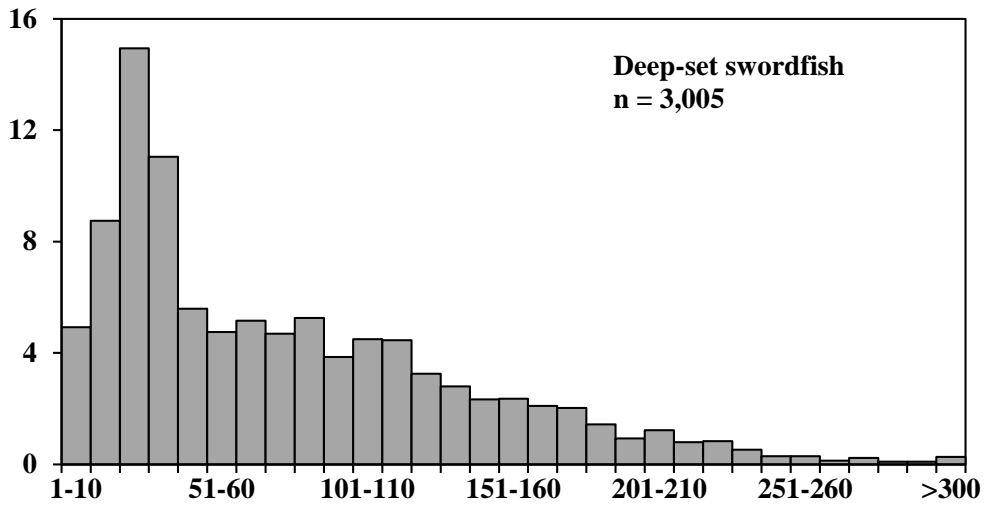


Figure 10.— Number of California-based longline vessels, 1987-2012.

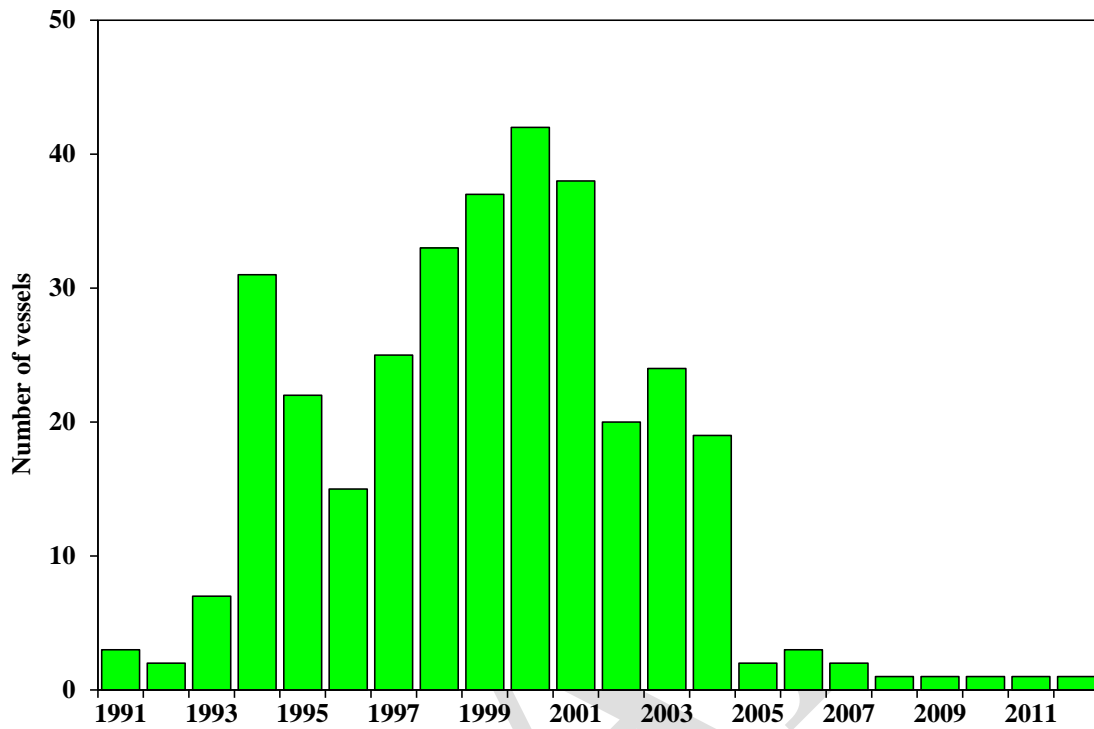
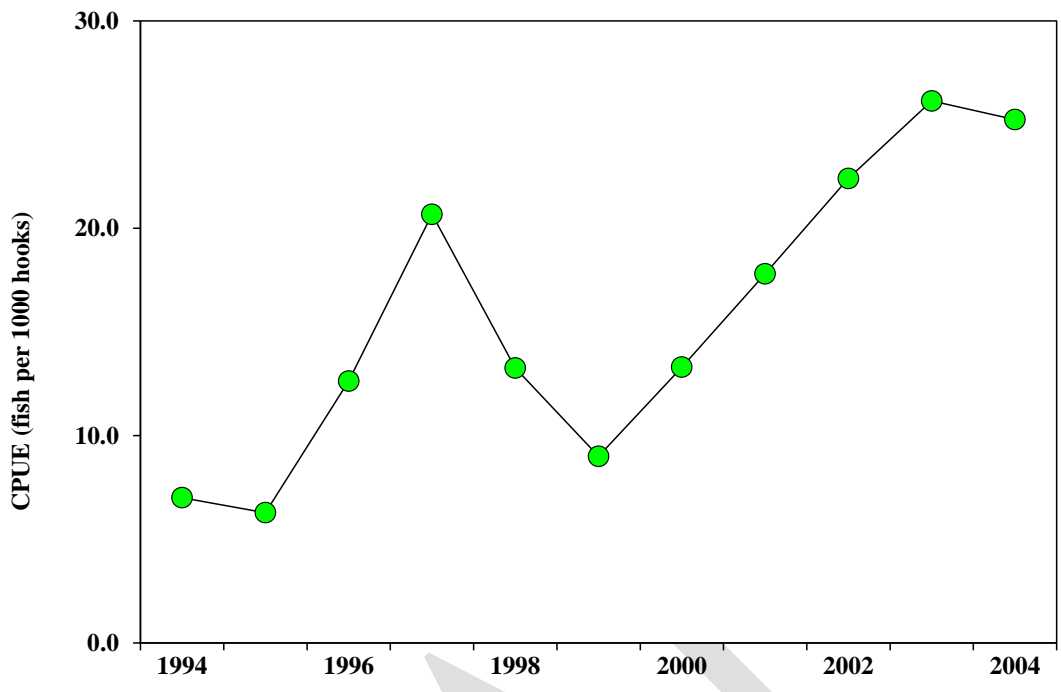


Figure 11.—California-based longline catch-per-unit-effort (CPUE), 1994-2004.



DRAFT