



*16<sup>th</sup> Meeting of the  
International Scientific Committee  
for Tuna and Tuna-Like Species in the North Pacific Ocean  
Sapporo, Hokkaido, JAPAN  
13-18 July 2016*

## **National Report of Japan<sup>1</sup>**

National Research Institute of Far Seas Fisheries  
Japan Fisheries Research and Education Agency

July 2016

<sup>1</sup>Prepared for the sixteenth Meeting of the International Scientific committee on Tuna and Tuna-like Species in the North Pacific Ocean (ISC), 13-18 July, 2016, Sapporo, Hokkaido, JPN. Document should not be cited without permission of the authors.

## National report of Japan

**Yohei Tsukahara<sup>2</sup>, Yuko Hiraoka<sup>2</sup>, Hiroyuki Shimada<sup>2</sup>,  
Seiji Ohshimo<sup>2</sup>, Nobuaki Suzuki<sup>2</sup>, Hidetada Kiyofuji<sup>2</sup>,  
Osamu Sakai<sup>2</sup>, Ko Fujioka<sup>2</sup>, Hirotaka Ijima<sup>2</sup>, Mikihiko Kai<sup>2</sup>, Yasuko Semba<sup>2</sup>,  
and Koji Uosaki<sup>2</sup>**

*<sup>2</sup>National Research Institute of Far Seas Fisheries,  
Japan Fisheries Research and Education Agency  
5-7-1, Orido, Shimizu-ku, Shizuoka 424-8633, Japan*

### Summary

Japanese tuna fisheries consist of the three major fisheries (i.e., longline, purse seine, pole-and-line) and other miscellaneous fisheries like troll, drift-net, set-net fisheries. This paper described the recent trend of the Japanese tuna fisheries in the north Pacific Ocean and updated the statistics given in the previous National Report for ISC15 (Ijima et al 2015). The total catch of tunas (excluding skipjack) caught by Japanese fisheries in the north Pacific Ocean was 108,745 metric ton (t) in 2014 and 101,807 t in 2015. The total catch of tunas (including skipjack) caught by Japanese fisheries in the north Pacific Ocean was 289,446 t in 2014 and 289,358 t in 2015. The total catch of swordfish and striped marlin was 6,312 t in 2014 and 7,026 t in 2015. In addition to fisheries description, a brief description was given on Japanese research activities on tuna and tuna-like species in the Pacific Ocean in 2015.

### 1. Trends in fleet size

Tables 1A and 1B show the number of Japanese tuna fishing vessels actually engaged in fishing by type of fishery and by vessel size class during 1980-2006 (MAFF 1982-2008) and 2006-2014. The number of active vessels 2006-2015 was estimated based on logbook data. The coastal longline vessels less than 20 Gross Register Tonnage (GRT), the research and training vessels of both longline and pole-and-line are not included in Table 1B. The values of number of vessels in 2014 and 2015 are provisional in Table 1B.

The total number of longline vessels shows continuous declining trend since the early 1990s (Table 1A). The number of longline vessels of the largest size class (> 200 GRT) was near constant in the period between the beginning of 1980s and the mid-1990s. In accordance with the agreement of the FAO's international action plan on fishing capacity, Japanese

government implemented fleet reduction program and decreased its large longline vessels by 20% in 1998. The number of longline vessels continued to decline thereafter. In 2009, Japanese government implemented 2<sup>nd</sup> fleet reduction program for this fishery following management measures adopted in tuna RFMO. Recent declining trend for larger than 50 GRT is remarkable, the number of vessels of 100-199 GRT was 24 in 2015 which is 46% of that in 2006, and the number of vessels of 50-99 GRT was 18 in 2015 which is 41% of that in 2006 (Table 1B). This large reduction was mainly derived from high price of fuel especially since 2007 and the fleet reduction program implemented by the Government of Japan in March 2009 following a management measures agreed in WCPFC. For the under 50 GRT vessel classes, the number of vessels for 20-49 GRT showed sharp decline since the late 1980s whereas the number of vessels of smallest size class (< 20 GRT) fluctuated at around 700 during the 1980-2006 (Table 1A). The number of vessels of 10-49 GRT was relatively stable, ranging between 270 and 290 during the 2006-2011 and then decreased to 227 in 2015 (Table 1B).

The total number of purse seine vessel was 52 in 2006, and it was nearly 80% of that in the 1980s (Table 1A). After 2006, the total number of purse seine vessels, however, shows a trend of slight increase, and was 75 at a peak in 2012 and 2013. After that, the number of vessels shows decrease trend. The purse seine vessel which is allowed to operate in the tropical waters is larger vessel (currently, > 348 GRT). The number of such vessel has been 35 and has not changed since 1995.

The total number of pole-and-line vessels shows continuous declining trend since 1980 (Table 1A and 1B). Suppose vessel size categories 20-49 GRT, 50-199 GRT, over 200 GRT for the 1980-2006 to compare with that in the 2006-2015, the number of vessels for each category shows declining trend throughout the period (Table 1A). The number of vessels for 20-49 GRT, 50-199 GRT, over 200 GRT shows declining trend throughout the period (Table 1B). The number of vessels for 50-199 GRT was 51 in 2015 which is 61% of that in 2006, for over 200 GRT was 23 in 2015 which is 77% of that in 2006.

## **2. Catch and effort trends of the major fisheries**

### **2.1 Longline**

Longline is classified by the type of license issued by the Government of Japan, i.e., coastal (< 20 GRT and can fish only in Japanese EEZ), small offshore (10-20 GRT), offshore (10-120 GRT), and distant water (> 120 GRT).

The fishing effort of the distant water and offshore longline remained stable at around 200 million hooks in the North Pacific in the 1980s, and then it decreased continuously to 100 million hooks in the early 2000s, and it has further decreased until 2009 (Fig. 1). After 2009, the amount of effort was relatively stable between 39-48 million hooks (Fig. 1). Annual distribution of fishing effort of longline in 2014 and 2015 are shown in Fig. 2. In those years,

the fishing grounds were located in east-west direction off Japan to Hawaii, equatorial area between 15 °S and 15 °N, off Australia and off Peru.

Total catch of four tuna and four billfish species of distant water and offshore longline in the north Pacific has been decreased since the highest catch of 119,752 t in 1980, and was 18,952 t in 2015 which is 16% of that in 1980 (Fig. 1). Bigeye has been the dominant species in this fishery in the north Pacific. The bigeye catch, which was stable in the 1980s and about 50,000 t in late 1980s, shows a declining trend in the 1990s and was less than 10,000 t in 2009. Yellowfin catch ranged between 30,000 t and 50,000 t until early 1980s. It has gradually decreased to less than 5,000 t in 2007. Albacore catch which have fluctuated around 10,000 t until 2001 decreased to about 4,000-6,000 t and kept stable at a low level during the period 2003-2015.

## 2.2 Purse seine

There are two types of Japanese purse seiners targeting tunas, i.e., single and group purse seine. Other than those, coastal purse seiner takes relatively small amount of tunas as a by-catch. Historically, typical group seiner consists of one purse seiner and one searching vessel and two carrier vessels, but the group seiner tends to reduce number of vessels within each group to reduce a cost in recent years. The group seiner operates mainly in the temperate northwestern Pacific (Fig. 4). The carrier holds fish in chilled water with ice and unloads those catches. Meanwhile, the single purse seiner (> 349 GRT) operates mainly in the tropical waters of the central and western Pacific, but a part of the vessels seasonally operates in the temperate waters (Fig. 4).

The fishing effort and catch for the purse seine, excluding the coastal purse seine, in the North Pacific is shown in Fig. 3. The fishing effort was around 9,000 sets in the late 1980s, and then decreased to about 6,000 sets in 1998 (Fig. 3). The fishing effort generally stayed at the level about 4,000-6,000 sets in the last decade. The skipjack catch dominant among species in this fishery, followed by yellowfin. The skipjack catch was about 150,000 t until 2008, and then decreased to 80,000 t in 2011, which recovered to 140,000 t in 2012. The skipjack catch in 2015 was 118,884t which is 108% of the recent 5-year average (2010-2014). The yellowfin catch in 2015 was 25,073 t which is 188% of the recent 5-year average.

## 2.3 Pole-and-line

The pole-and-line is composed of three different categories, i.e., coastal (< 20 GRT), offshore (10-120 GRT) and distant water (> 120 GRT) vessels in terms of the license of this fishery. Note that some of 19 GRT type vessels obtained offshore license since 2007, which are included into offshore category in this document. The pole-and-line can be categorized into large, middle, and small sized vessels which correspond to larger than 300 GRT, 20-300 GRT and less than 20 GRT in vessel size.

The middle-sized vessels generally operate in near shore waters of Japan and their trips are within 10 days. Southern most fishing area for these vessels, in recent years, is near 15°N, but the important fishing ground is waters north of 25°N, around Japan and adjacent areas (Fig. 6). These vessels primarily fish skipjack and albacore tunas from spring through autumn off Pacific side of Japan, and also harvest relatively small amount of yellowfin and bigeye. They hold fish in cooled water and unload it as fresh fish. The activity of the small pole-and-line vessels is more or less similar to that of the middle vessels but the area of fishing is limited within the Japanese EEZ, and the trip of these vessels is shorter. On the contrary, the large vessels tend to operate farther off waters from Japan and their trips last for two to three months. Usually they primarily target for albacore from summer through autumn season in the waters north of 20°N, and skipjack in winter and spring in the waters south of 20°N (Fig. 6). These vessels equip a brine freezer, in which fish caught are immediately stored into a tank filled with cooled brine, and then unloads it as frozen fish.

Generally, fishing effort expressed by fishing days for offshore and distant water pole-and-line rapidly decreased from around 62,000 days in the early 1980s to around 20,000 days in 1991, increased to around 23,000 days in 2000, and then gradually decreased to 12,195 days in 2015 (Fig. 5). Total catch of five tuna species for those fisheries rapidly decreased from around 280,000 t to around 170,000 t during the 1980s, and then gradually decreased from around 130,000 t to 80,000 t until the latest year (Fig. 5). Skipjack is dominant species for this fishery but the proportion of skipjack tends to decrease, from 80-87% in the 1980-1984 to 60-72% in the 2011-2015.

Fishing grounds of the pole-and-line are widely spreads ranging from 45°N and 10°S, from 120°E to 170°W. The fishing grounds were separated by around 25 degree north but more continuous than the purse seine fishing grounds (Figs. 4 and 6).

### **3. Recent trends for major species**

#### **3.1. Pacific bluefin tuna (Table 2-A)**

Preliminary total catch of Pacific bluefin tuna (PBF) in 2015 was 6,190 t, which corresponded to 35% decrease of the catch in 2014 (9,577 t). This was lower than the average of past 5 years (2010-2014: 8,700 t). Since January 2015, Japan has implemented strict catch limit especially for small fish (smaller than 30 kg). Catch of small fish is also affected by the recruitment level, therefore, Japanese catch tends to fluctuate largely (Table 2-A). For example, lower recruitment was estimated in 2012 and 2014 fishing year by current stock assessment, while small pelagic purse seine (small PS) targeting age 0-1 fish showed 1st and 2nd smallest catch (763 t and 884 t) in the past 10 years in 2013 and 2015 calendar year, respectively. In contrast, their catch in 2014 was relatively high reflecting the recruitment condition. Longline fishery tends to target the larger fish, and their length frequency had a mode at 180 cm FL and 200 cm FL in 2014 and 2015, respectively (Fig. 7).

### **3.2. Albacore (Table 2-B)**

Preliminary total catch of albacore in 2015 was 39,890 t, which was declined from the catch in 2014 (51,841 t) and was smaller than the average of past 5 years (2010-2014: 51,769 t), though the value in 2015 is provisional. Albacore catch by the pole-and-line fluctuated largely, but catch by longline was comparatively stable. Fishing effort mainly targeted on albacore by middle class (20-199 GRT) and large (> 200 GRT) pole-and-line vessels fluctuated in recent years. Catch by longline in 2015 (16,237 t) was smaller catch in 2014 (19,970 t). The length frequency for longline distributed from approximately 70-130 cm FL, whereas much smaller fishes were caught by pole and line, which distributed from approximately 50-100 cm FL in 2014 and 2015 (Fig. 8).

### **3.3. Swordfish (Table 2-C)**

Preliminary total catch of swordfish in 2015 was 5,524 t which corresponds to 12% increase of the catch in 2014 (4,936 t) and was larger than the average of past five years (2010-2014: 5,079 t). Swordfish has been caught mainly by offshore and distant-water longline, which catch in 2015 was 3,879 t. The catch by coastal longline showed a drastic decrease from 2,014 t in 2007 to 973 t in 2011, which is primarily due to the reduction of the number of longline boats especially in the Tohoku area, where part of boats operates night-shallow sets targeting swordfish, by the Great East Japan Earthquake in 2011. The length frequency for longline distributed from 90-210 cm eye-fork length in 2014 and 2015 (Fig 9).

### **3.4. Striped marlin (Table 2-D)**

Preliminary total catch of striped marlin in 2015 was 1,502 t which corresponds to 9% increase of the catch in 2014 (1,376 t) and was smaller than the average of past five years (2010-2014: 1,828 t). Total catch of striped marlin shows continuous decreasing trend since the mid-1980s primarily due to the decline of the catch of offshore and distant-water longline (from 6,378 t in 1980 to 292 t in 2015). In recent years, Japanese pelagic fisheries catch striped marlin as bycatch except for coastal driftnet and part of another longline which is seasonal targets striped marlin. The length frequency of striped marlin in 2014 showed three-mode, and appearances of a vast number of small-sized fish which were mainly measured off Hawaiian water (Fig. 10). The sample size of the length frequency data in 2015 is considerably smaller than 2014, and that mode of small sized fish was disappeared (Fig. 10).

### **3.5 Blue shark (Table 2-E)**

A total catch of blue shark by Japanese fisheries was estimated 17,083 t in 2014. Those had increased and reached at 24,177 t in 2010, and then had decreased since 2010 due to suffering of coastal and offshore longliners, who seasonally target blue shark, by the Great East Japan Earthquake. In addition to the update of the catch in 2014, most of the previous catch during

2010-2013 were updated due to the revision of the latest available species specific data and statistics.

### **3.6. Others (Bigeye, Skipjack and Yellowfin) (Table 2-F, G and H)**

Preliminary total catch of bigeye in 2015 was 18,189 t which correspond to 15% decrease of the catch in 2014 (21,472 t) and was lower than the average of past 5 years (2010-2014: 19,556 t). Total catch of bigeye by Japanese fisheries showed no clear trend and longline has been the highest proportion among gears in the North Pacific.

Preliminary total catch of skipjack in 2015 was 187,639 t which correspond to 14 % increase of the catch in 2014 (164,209 t) and was slightly higher than the average of past 5 years (2010-2014: 185,505 t). Most of skipjack was caught by pole-and-line and purse seine in the North Pacific.

Preliminary total catch of yellowfin in 2015 was 37,538 t which correspond to 45 % increase of the catch in 2014 (25,855 t) and was higher than the average of past 5 years (2010-2014: 27,291 t). The yellowfin catch by purse seine has been the highest proportion among gears in the North Pacific. The increase of the total catch was mainly due to increase of purse sein catch in tropical waters in the North Pacific.

## **4. Research activities**

The Fishery Agency of Japan, in cooperation with the National Research Institute of Far Seas Fisheries (NRIFSF) and local prefectural fisheries experimental stations, has run the nationwide port sampling project for collection of catch, effort and size data at the major landing ports since the early 1990s. The tagging studies using conventional, archival and popup has been conducted by research and training vessels as well as commercial vessels. In addition, there are cooperative works with prefectural fisheries experimental stations and universities. Several cooperative studies are also on going with foreign countries.

### **4.1. Pacific Bluefin tuna**

#### *4.1.1. Pacific bluefin tuna larvae/juveniles research cruise*

Since 2011, larval surveys have been conducted to estimate current main spawning area and period of PBF. In 2015 research cruises were conducted for ecological study of larval/juvenile PBF by R/Vs Shunyo-Maru, Yoko-Maru, and five prefectural R/Vs. Larval surveys were conducted in the south of Japan around Nansei Islands area, where is a major spawning ground of PBF, from 9 May to 13 August and found that PBF larvae were found in the south of Yaeyama Islands and in the southwest Miyako Island. Larval surveys were conducted also in the Sea of Japan, which is another spawning ground of PBF, from 19 July to 5 August, and PBF larvae were captured in the west of the Noto Peninsula and the east of Oki Islands. Compiling the four years cruise data from 2011 to 2014, spawning grounds of PBF were

estimated by simulating backward Lagrangian transportation model. The results suggest that PBF start spawning late April in the west of Yaeyama Islands and east off Okinawa Main Island, the main spawning grounds were estimated along the Kuroshio Current and east of Okinawa Main Islands. While in the Sea of Japan, PBF start spawning late June, and the main spawning grounds in the Sea of Japan were estimated in the waters off north Oki Islands.

#### *4.1.2. Recruitment Monitoring on Early Stage*

Recruitment abundance (CPUE of age-0 PBF) is obtained from a Japanese troll fishery. In addition, the NRIFSF has started a survey to get information on the recruitment in a more timely fashion by monitoring troll fishing boats since 2011. In the 2015 survey, data logger and transmitter are installed on 61 troll fishing boats in six prefectures (Mie, Wakayama, Kochi, Miyazaki, Nagasaki and Shimane). Once the fishermen input their catch number of age-0 fish into the data logger during the fishing operation, the catch information with geographic position data is sent to the NRIFSF via a cellular network on a real time basis. Based on the recruitment information, including that obtained through this survey, the NRIFSF has published CPUE time series for age-0 fish as preliminary estimations on recruitment abundance on the website of the Fishery Agency since September 2014.

#### *4.1.3. Tagging for Pacific bluefin tuna*

The NRIFSF has conducted a conventional tagging of age-0 PBF (about 20 cm in fork length) from the off Kochi prefecture since 2011. A total of 3,949 fish were released and 797 fish were recaptured (20.2%). In addition, the habitat utilization of 321 individuals in coastal nursery areas was investigated using small archival tags (LAT2910, Lotek Ltd.) implanted in a fish during summer (July-August) from 2012 to 2015. Eighty-nine tagged fish were recaptured in total (recovery rate 27.7%). They are expected to estimate the natural mortality (M) and fishing mortality (F) of age-0 period, and to provide valuable information on the design of reliable recruitment monitoring survey and the precise estimation of recruitment abundance levels as well as biology of juvenile periods.

The NRIFSF has also conducted a tagging survey of adult PBF at Sado Island in the Sea of Japan in spring (May) since 2012 to clarify the spawning behavior and migration ecology. A total of 17 fish about 30 kg in weight were attached archival tags and some of them were fitted with acceleration data-loggers. Six tagged fish were recaptured (recovery rate 35.3%) in the Sea of Japan after one week to 45 months.

#### *4.1.4. Tissue sampling and technical development for close-kin analysis*

The NRIFSF has started tissue sampling for close-kin genetics since 2014 and sampled successfully from more than 900 individuals in 2015. Large mature adults of PBF (about 120-300 kg in body weight: BW) were sampled from individuals fished by coastal long-line fishery



around Okinawa Islands in late April to early July, while young-of-the-year juveniles (about 0.1-0.3 kg in BW) being from marked fish caught by troll fishery and then released into environments off Kochi Prefecture in August. Young adults as well as nearly-matured juveniles (about 20-60 kg in BW) were also sampled from fish landed at Sakai-minato, western part of the Sea of Japan, and Matsumae, southwest of Hokkaido, fish markets in July and in September to December, respectively. All of muscle tissues sampled were preserved in specific buffer (TNES-Urea 6M buffer) because of higher stability of content DNA.

Furthermore, the NRIFS has started a wide range of approaches to develop a basic framework of close-kin analysis in PBF; screening effective single-nucleotide-polymorphic markers (SNPs), evaluating SNPs quality and quantity to detect parent-offspring-pairs (POPs), examining procedure for SNPs genotyping and algorithms for POPs detection, and statistical modeling based on population genetics and dynamics.

## **4.2. Sharks**

### *4.2.1. Port sampling and onboard research program in Kesennuma fishing port*

In 2015, size and sex data of blue shark and shortfin mako shark was collected from port sampling project in Kesennuma fishing port between January and December. For blue shark, size data from 62,682 individuals were collected from port sampling and 75% of individuals measured was males. In addition, 59% of males and 62% of females were juveniles. Regarding blue shark, the catch number by four categories of size were recorded in the onboard research program for Kesennuma offshore longline fleet. Total of 271,471 blue shark were recorded and “large (processed weight:  $\geq 15$  kg)” consisted 40% of all catch with 25% of “middle ( $11 \text{ kg} \leq \text{processed weight} < 15 \text{ kg}$ )”, 25% of “small ( $5 \text{ kg} \leq \text{processed weight} < 11 \text{ kg}$ )” and 10% of “extra small (processed weight:  $< 5 \text{ kg}$ )”.

For shortfin mako, data from 12,666 and 11,183 individuals were collected from port sampling and onboard research, respectively. Regarding shortfin mako measured in the port sampling, 87.7% of males and 100% of females were juveniles. In contrast to blue shark, all of female were juvenile in shortfin mako. These data will be combined for the previously collected data to sketch their sex and growth specific seasonal migration patterns.

### *4.2.2. Research cruise*

From research and training vessel cruise, catch data from 2,801 blue shark and 146 shortfin mako were obtained. In the research cruise by Taikei No.2 conducted between April and June in 2015, total of 1,116 blue shark and 69 shortfin mako were recorded. Body length in cm (DL: dorsal length for blue shark and PCL: Pre-caudal length for blue shark and shortfin mako) and sex data were collected from 1,069 blue shark and 68 shortfin mako. Tagging was conducted for 170 blue shark and 33 shortfin mako. Within the cruise by Taikei No.2, whole body from

23 blue shark and 14 shortfin mako were retained for the biological studies including detailed measurement of body length and weight.

In the research cruise by Shunyo Maru conducted between September and October in 2014, popup satellite archival tag (PSAT) was deployed for 19 blue shark.

#### *4.2.3. Biological sample collection*

For the estimation of life history parameters, vertebrae and/or reproductive organ were collected from 80 blue sharks and 133 shortfin mako caught by Kesenuma offshore longline fleet. For blue shark, these samples have been processed for the revision of past studies on growth and reproduction. For shortfin mako, the vertebrae are going to be used for the refinement of juvenile growth estimate.

### **4.3. Skipjack**

#### *4.3.1. Tagging for skipjack*

The NRIFSF has been conducting skipjack tagging mainly to investigate migration pattern to the fishing ground off Japan. One offshore pole-and-line vessel was chartered and tagging was conducted in the south off Japan between February and March in 2015. A total of 1,934 skipjack tuna including 149 fish with archival tag (Lotek LAT2910) were released. To date nine fish was recaptured. In addition, skipjack tagging has been being conducted in cooperation with Ajinomoto Co., Inc. in the coastal area of southwestern Japan since 2009. In 2015, 337 skipjack tuna including 139 fish with archival tag and 41 fish with sonic tag were released at around Yonaguni Island (24°N, 123°E) in February - March and May - June, and so far six fishes including two fishes with archival tag were recaptured.

Besides above studies, four research/training pole-and-line vessels conducted skipjack tagging in the area 19-38°N, 138-150°E in May and June 2015. Total of 693 skipjack were released with the conventional tag, and 102 were recovered. By one of these vessels, collaborative study of archival tagging with NRIFSF has been being conducted since 2010. In 2015, a total of 87 archival tags were deployed in the south off Japan and around Izu Islands (central part of Japan) in May to June, respectively and six fish were recaptured. Another collaborative study was conducted in 2015 and a total of 40 skipjack tuna caught by troll were released with archival tag around Hachijo Island (33°N, 139°E) in May, and two fishes were recaptured.

### **References**

Hiroataka Ijima, Hiroyuki Shimada, Kazuhiro Oshima, Ko Fujioka, Yasuko Semba, Mikihiko Kai, Seiji Ohshimo, Hidetada Kiyofuji, Takayuki Matsumoto and Koji Uosaki (2015): National report of Japan. ISC/15/Plenary/06. 19pp.

MAFF (1982-2015): Gyogyou yousyokugyou seisan toukei nenpou (Yearbook of fisheries and aquaculture production statistics of Japan for 1980-2013, Statistics Department, Minister's Secretariat, Ministry of Agriculture, Forestry and Fishery.

MAFF (2016): Gyogyou yousyokugyou seisan toukei nenpou (Yearbook of fisheries and aquaculture production statistics of Japan for 2014, Statistics Department, Minister's Secretariat, Ministry of Agriculture, on the portal site for governmental statistics "e-Stat" (published in April 26, 2016).

[https://www.e-](https://www.e-stat.go.jp/SG1/estat/GL08020103.do?_toGL08020103_&listID=000001152156)

[stat.go.jp/SG1/estat/GL08020103.do?\\_toGL08020103\\_](https://www.e-stat.go.jp/SG1/estat/GL08020103.do?_toGL08020103_&listID=000001152156)

[\\_&listID=000001152156](https://www.e-stat.go.jp/SG1/estat/GL08020103.do?_toGL08020103_&listID=000001152156)  
[\\_&requestSender=dsearch](https://www.e-stat.go.jp/SG1/estat/GL08020103.do?_toGL08020103_&listID=000001152156)

Table 1A. Number of Japanese tuna fishing vessels operated in the Pacific Ocean by type of fisheries and vessel size based on MAFF (1982-2008).

Year	Longline fishery <sup>*1</sup>					Purse seine fishery			Pole-and-line fishery						
	1-19 GRT	20-49 GRT	50-99 GRT	100-199 GRT	200-GRT	Total	50-199 GRT <sup>*2</sup>	200-GRT	Total	1-19 GRT <sup>*3</sup>	20-49 GRT	50-99 GRT	100-199 GRT	200-GRT	Total
1980	821	57	715	103	645	2,341	50	16	66	3,232	14	350	10	198	3,804
1981	774	55	706	100	661	2,296	50	23	73	3,064	10	353	6	179	3,612
1982	722	43	634	90	589	2,078	52	33	85	3,011	11	320	6	138	3,486
1983	561	38	589	93	550	1,831	59	36	95	3,021	12	297	9	116	3,455
1984	523	32	538	108	610	1,811	54	33	87	2,904	8	273	10	105	3,300
1985	620	28	512	131	628	1,919	47	35	82	2,754	8	244	9	95	3,110
1986	536	25	435	168	632	1,796	53	38	91	2,455	6	224	9	91	2,785
1987	661	23	348	197	649	1,878	47	34	81	2,404	6	210	9	89	2,718
1988	586	21	289	233	649	1,778	48	39	87	2,613	5	191	11	70	2,890
1989	650	20	248	238	653	1,809	43	37	80	2,254	3	187	12	67	2,523
1990	685	21	227	241	664	1,838	43	35	78	2,228	4	176	9	66	2,483
1991	768	19	199	222	682	1,890	38	35	73	2,277	3	166	10	63	2,519
1992	793	19	164	206	681	1,863	31	38	69	2,093	3	156	11	46	2,309
1993	790	18	138	201	682	1,829	27	36	63	1,927	3	147	10	43	2,130
1994	819	21	110	198	675	1,823	23	33	56	1,830	3	124	10	48	2,015
1995	738	20	92	187	667	1,704	20	31	51	481	3	104	20	46	654
1996	711	17	91	155	640	1,614	21	32	53	512	3	89	29	43	676
1997	698	11	88	145	631	1,573	20	35	55	436	2	76	39	45	598
1998	712	11	80	129	623	1,555	20	35	55	382	2	73	40	46	543
1999	703	6	78	119	567	1,473	22	36	58	416	1	62	54	46	579
2000	732	3	76	111	496	1,418	23	37	60	357	1	56	57	47	518
2001	777	4	76	110	494	1,461	19	36	55	285	1	49	59	47	441
2002	780	4	69	110	484	1,447	18	36	54	251	1	45	58	48	403
2003	764	3	64	99	460	1,390	17	36	53	292	1	44	56	44	437
2004	702	2	55	77	455	1,291	17	36	53	284	1	38	57	43	423
2005	694	2	46	59	432	1,233	17	36	53	247	1	36	58	45	387
2006	709	1	43	54	401	1,208	16	36	52	213	1	27	58	36	335

\*1 Longline vessels larger than 50 GRT include those operated in the area other than the Pacific

\*2 50-199 GRT class vessels only include those operated in the Pacific side of northern Japan.

\*3 1-19 GRT class vessels before 1995 include those engaged in trolling

Table 1B. Number of Japanese tuna fishing vessels operated in the North Pacific Ocean by type of fisheries and vessel size based on logbook. Value in 2015 is provisional.

Year	Longline fishery					Purse seine fishery				Pole-and-line fishery			
	10-49 GRT	50-99 GRT	100-199 GRT	200-GRT	Total	50-199 GRT <sup>*2</sup>	200-499 GRT	500-GRT	Total	20-49 GRT	50-199 GRT	200-GRT	Total
2006	277	44	52	113	486	31	35	1	67	1	83	30	114
2007	279	42	48	89	458	34	36	1	71	1	77	29	107
2008	277	42	40	90	449	35	37	1	73	1	69	29	99
2009	277	38	33	81	429	33	36	3	72	1	68	28	97
2010	290	29	28	98	445	31	35	4	70	1	66	28	95
2011	272	24	25	99	420	33	36	4	73	0	63	28	91
2012	262	21	21	92	396	34	37	4	75	0	60	27	87
2013	257	20	23	87	387	34	37	4	75	0	55	25	80
2014	246	18	21	90	375	33	37	3	73	1	54	25	80
2015	227	18	24	75	344	30	35	5	70	1	51	23	75

Table 2. Catch in weight (t) by species by fisheries in the North Pacific.

A. Pacific bluefin tuna

Year	Purse Seine <sup>*1</sup>		Dist. & Off. Longline <sup>*2</sup>		Coastal Longline <sup>*2</sup>	Troll	Pole and Line	Set Net	Others <sup>*4</sup>	Total
	Tuna PS	Small PS	North Pacific	South Pacific						
2010	1,122	2,620	5	6	885	1,583	83	1,603	495	8,401
2011	2,227	6,113	9	11	828	1,820	63	1,651	283	13,004
2012	1,043	1,419	6	8	667	570	113	1,932	343	6,101
2013	2,008	763	7	7	777	904	8	1,415	529	6,418
2014	2,250	3,206	11	4	672	1,023	5	1,907	499	9,577
2015	2,478	886	12	4	635 <sup>*3</sup>	462	9	1,290	415	6,190

\*1: Catch amounts of purse seine fisheries are based on logbook data since 2002.

\*2: Distant-water and Offshore longline vessels are mainly 20 GRT or larger, and most of coastal longline vessels are smaller than 20 GRT.

\*3: Catch of coastal longline in 2015 is provisional value.

\*4: Others include drift net, handline, trawl, other longline, and unclassified fisheries.

B. Albacore

Year	Longline		Pole-and-line				Purse seine	Troll	Setnet	Others <sup>*6</sup>	Total
	Distant Water + Offshore <sup>*5</sup>	Coastal	Distant Waters	Offshore	Coastal	Driftnet					
2010	3,943	17,224	15,737	3,689	135	24	330	588	42	37	41,749
2011	4,858	16,098	16,803	8,844	57	12	480	443	50	78	47,723
2012	5,160	17,668	22,710	10,940	92	26	4,193	610	48	129	61,576
2013	4,729	15,110	21,197	12,310	61	14	1,988	302	36	211	55,958
2014	4,269	15,701	17,462	11,890	81	11	2,009	197	24	197	51,841
2015	(4,095)	(12,142)	(6,270)	(14,865)	(81)	(11)	(2,009)	(197)	(24)	(197)	(39,890)

\*5 category distant water + offshore LL includes training/research vessel

\*6 Others include Troll catch for 1952-1994

( ) different data source or carry over from previous year

C. Swordfish

Year	Longline			Drift net	Bait			Others	Total
	Distant Water + Offshore	Coastal	Others		fishing	Net fishing	Trap net		
2010	4,240	1,158	2	494	230	0	8	110	6,241
2011 <sup>*7</sup>	3,046	973	2	193	233	0	2	10	4,460
2012	2,946	1,080	4	371	288	0	8	59	4,755
2013	3,319	921	5	290	291	0	13	163	5,002
2014 <sup>*8</sup>	3,279	1,089	2	269	291	0	7	-	4,936
2015 <sup>*8</sup>	3,879	1,076	2	269	291	0	7	-	5,524

\*7 Some data in Tohoku area were not available due to the earthquake in 2011

\*8 Catch between 2014 and 2015 are preliminary

Table 2. Continued.

## D. Striped Marlin

Year	Longline				Bait fishing	Net fishing	Trap net	Others	Total
	Distant Water + Offshore	Coastal	Others	Drift net					
2010	187	832	42	913	36	-	20	26	2,056
2011 <sup>*9</sup>	319	932	55	347	26	-	30	32	1,741
2012	326	980	29	597	34	-	52	33	2,051
2013	358	1,099	33	336	34	-	39	19	1,918
2014 <sup>*10</sup>	265	846	35	173	22	-	35	-	1,376
2015 <sup>*10</sup>	292	945	35	173	22	-	35	-	1,502

\*9 Some data in Tohoku area were not available due to the earthquake in 2011

\*10 Catch between 2014 and 2015 are preliminary

## E. Blue shark

Year	Longline				Large mesh driftnet	Bait fishing	Trap net	Others	Total
	Distant Water	Offshore	Coastal	Others					
2009	6,383	11,495	1,382	716	908	1	6	14	20,905
2010	11,995	9,614	1,024	787	733	1	9	15	24,177
2011	14,522	4,194	64	859	438	3	7	3	20,089
2012	6,382	5,726	829	760	631	3	2	4	14,336
2013	6,989	8,203	1,124	622	898	2	4	13	17,855
2014	6,836	8,240	538	598	868	2	2	0	17,083

## F. Bigeye

Year	Longline	Pole-and-line	Purse seine	Gillnet	Set-net	Troll	Other	Total
2010	15,534	2,367	988	2	4	157	80	19,132
2011	17,744	2,318	1,609	1	2	141	138	21,953
2012	14,428	2,097	2,552	2	0	118	146	19,343
2013	11,780	2,446	1,421	1	5	116	111	15,880
2014 <sup>*11</sup>	15,792	2,836	2,546	0	0	160	138	21,472
2015 <sup>*11</sup>	14,180	848	2,863	0	0	160	138	18,189

\*11 Catch between 2014 and 2015 are preliminary

## G. Skipjack

Year	Longline	Pole-and-line	Purse seine	Gillnet	Set-net	Troll	Other	Total
2010	58	82,253	113,400	315	333	4,729	205	201,293
2011	98	69,998	83,667	111	625	1,780	93	156,372
2012	165	66,243	140,900	95	404	3,487	188	211,482
2013	178	80,833	110,212	112	209	2,514	111	194,169
2014 <sup>*12</sup>	132	58,621	104,159	119	131	954	93	164,209
2015 <sup>*12</sup>	69	67,302	118,971	119	131	954	93	187,639

\*12 Catch between 2014 and 2015 are preliminary

## H. Yellowfin

Year	Longline	Pole-and-line	Purse seine	Gillnet	Set-net	Troll	Other	Total
2010	9,701	4,540	11,374	22	103	3,167	421	29,328
2011	8,077	4,336	12,323	6	111	2,497	339	27,689
2012	6,482	3,651	19,317	6	113	2,279	369	32,217
2013	6,427	3,268	9,251	8	103	1,817	491	21,365
2014 <sup>*13</sup>	6,466	2,810	14,552	8	67	1,523	429	25,855
2015 <sup>*13</sup>	7,513	2,918	25,080	8	67	1,523	429	37,538

\*13 Catch between 2014 and 2015 are preliminary

Longline fishery

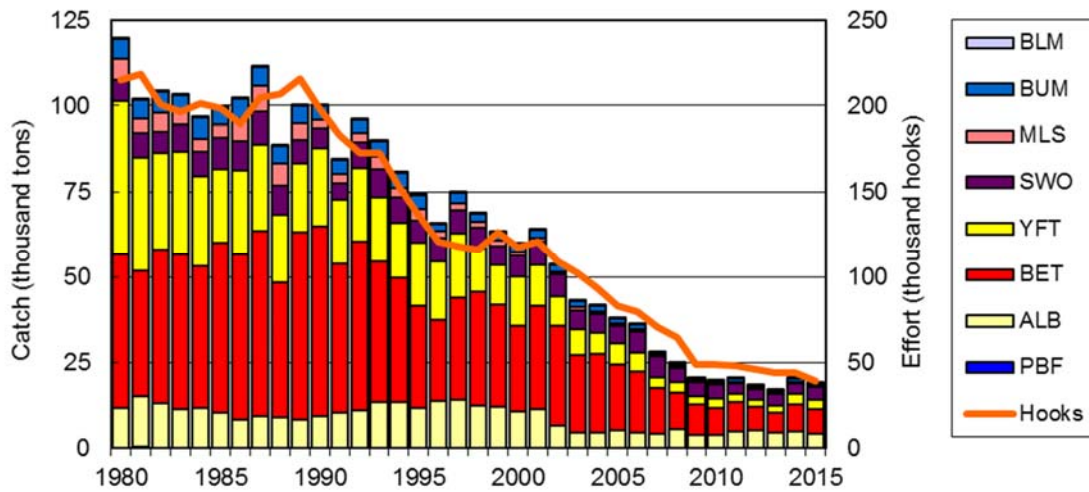


Fig. 1. Historical catches in weight (t) for major species and fishing effort (Number of hooks in million) of the Japanese distant water and offshore longline fisheries (not including small offshore fishery) in the North Pacific Ocean. PBF: Pacific bluefin tuna, ALB: albacore, BET: bigeye, YFT: yellowfin, SWO: sword fish, MLS: striped marlin, BUM: blue marlin. Values in 2014 and 2015 are provisional.

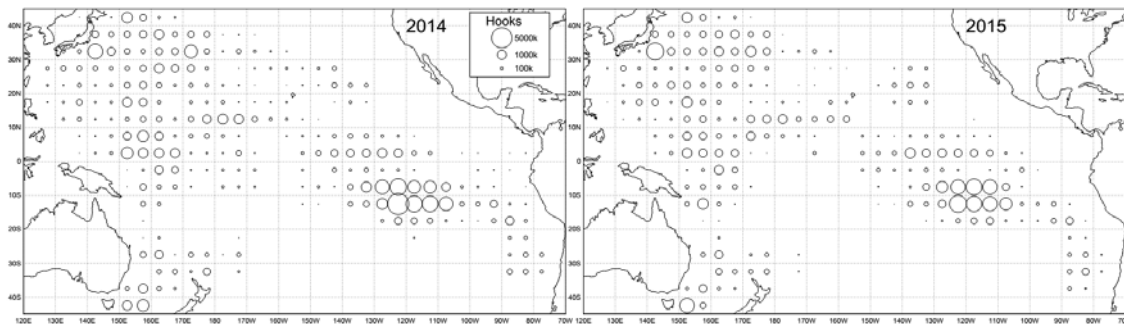


Fig. 2. Distribution of fishing effort (Number of hooks) for the Japanese distant water and offshore longline fisheries in the Pacific, 2014-2015.



Purse seine fishery

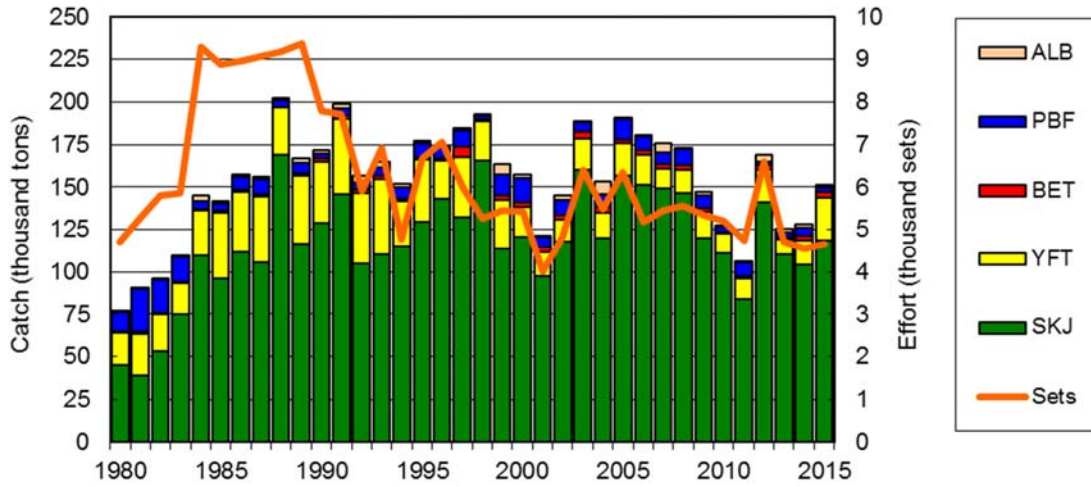


Fig. 3. Historical catches in weight (t) for major species and fishing effort (Number of sets) of the Japanese purse seine fishery in the North Pacific Ocean. SKJ: skipjack, YFT: yellowfin, BET: bigeye, PBF: Pacific bluefin tuna, ALB: albacore. Value in 2015 is provisional.

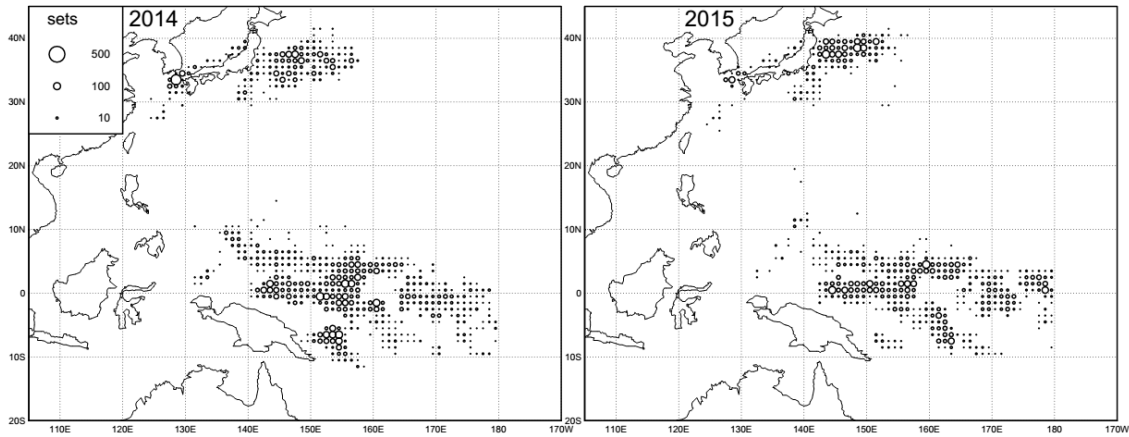


Fig. 4. Distribution of fishing effort (number of sets) for the Japanese purse seine fishery in the Pacific, 2014-2015.

Pole-and-line fishery

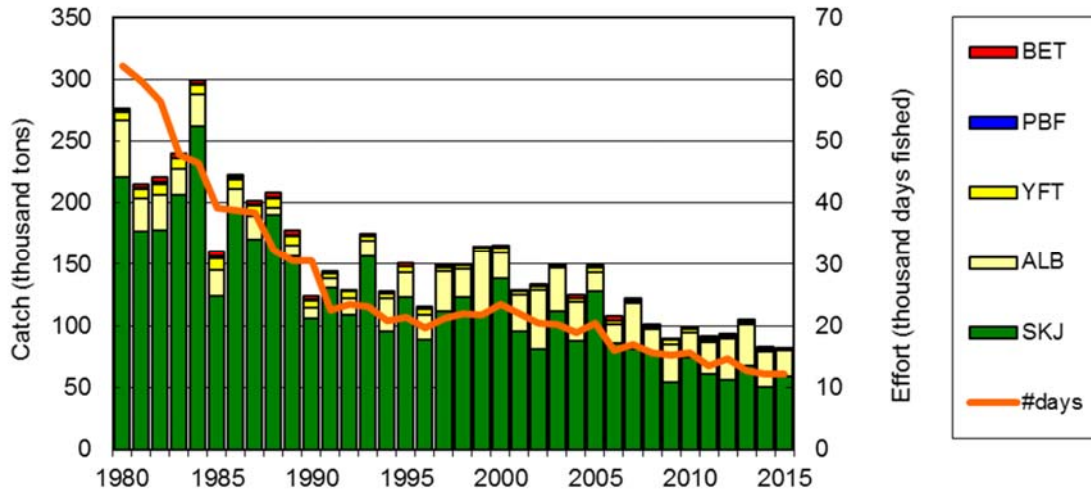


Fig. 5. Historical catch in weight (t) for major species and fishing effort (Number of fishing days) of Japanese distant water and offshore fisheries in the North Pacific. SKJ: skipjack, ALB: albacore, YFT: yellowfin, PBF: Pacific bluefin tuna, BET: bigeye. The catch for PBF includes the catch by coastal pole-and-line (less than 20 GRT vessels) fishery. Value in 2015 is provisional.

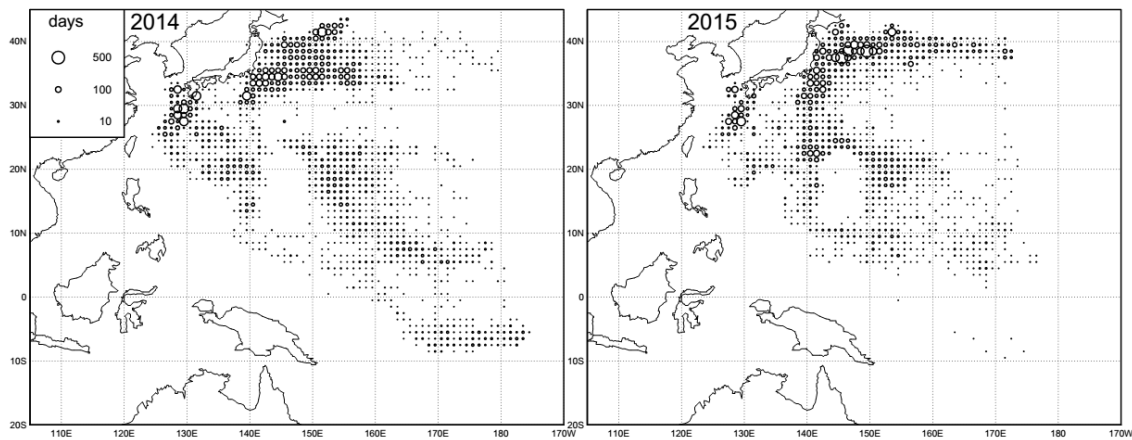


Fig. 6. Distribution of fishing effort (number of days) of the Japanese pole-and-line fishery (larger than 20 GRT vessels) in the Pacific, 2014-2015.

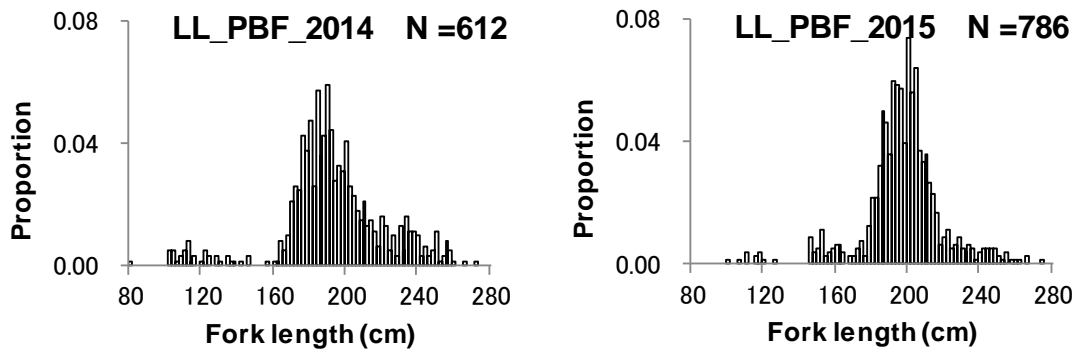


Fig. 7. Annual length relative frequency distribution (simply summing up all measurements) for Pacific bluefin tuna (PBF) caught by longline in 2014 (left) and 2015 (right). Texts in each graph indicate gear, species, year, and the number of fish measured.

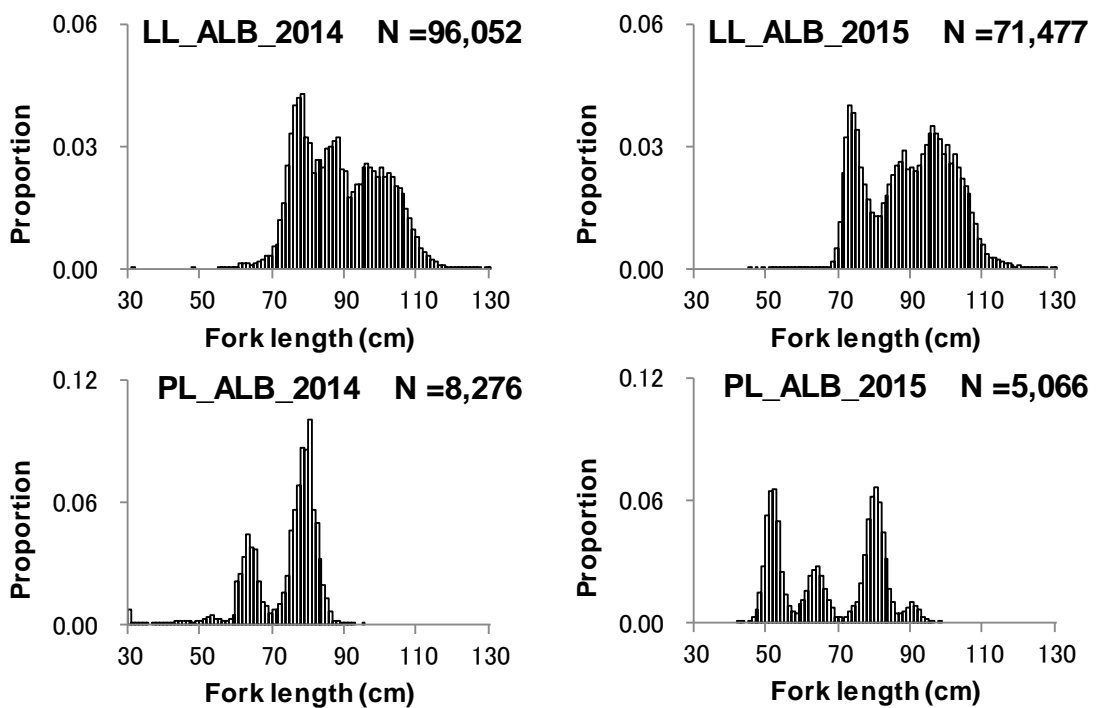


Fig. 8. Annual length relative frequency distribution (simply summing up all measurements) for albacore (ALB) caught by longline (upper two panels) and pole and line (lower two panels) in 2014 (left) and 2015 (right). Texts in each graph indicate gear, species, year, and the number of fish measured.

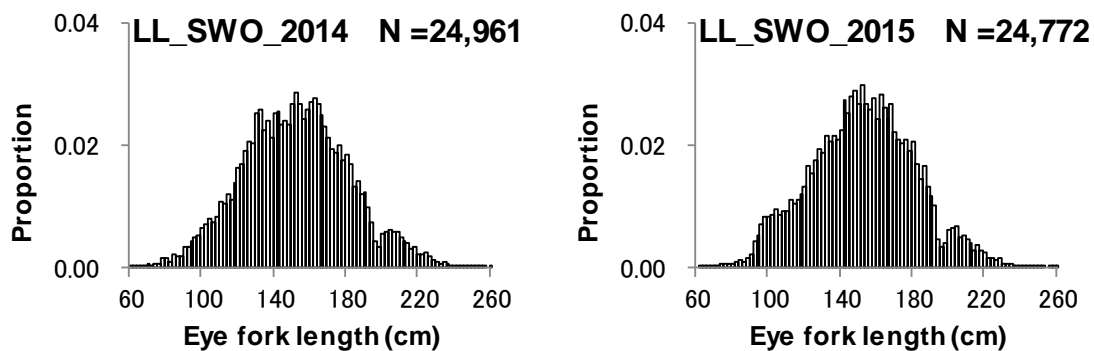


Fig. 9. Annual length relative frequency distribution (simply summing up all measurements) for swordfish (SWO) caught by longline in 2014 (left) and 2015 (right). Texts in each graph indicate gear, species, year, and the number of fish measured.

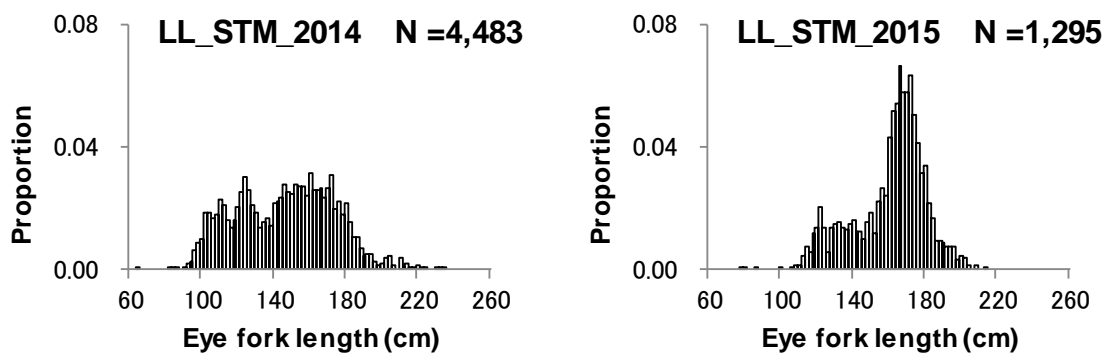


Fig. 10. Annual length relative frequency distribution (simply summing up all measurements) for striped marlin (STM) caught by longline in 2014 (left) and 2015 (right). Texts in each graph indicate gear, species, year, and the number of fish measured.