



*16th Meeting of the
International Scientific Committee
for Tuna and Tuna-Like Species in the North Pacific Ocean
Sapporo, Hokkaido, Japan
13-18 July 2016*

ISC Organizational Chart¹

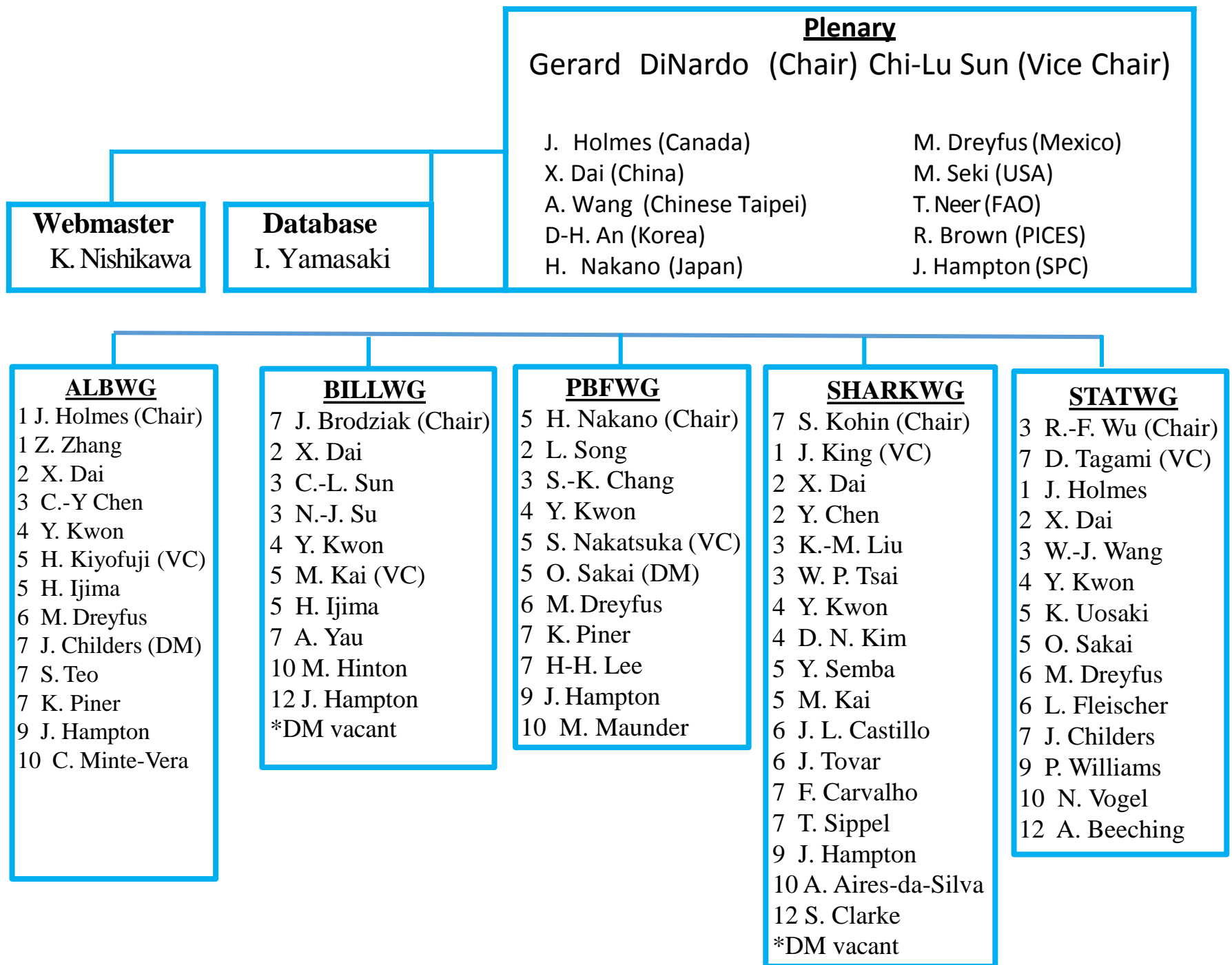
ISC

July 2016

¹Prepared for the Sixteenth Meeting of the International Scientific committee on Tuna and Tuna-like Species in the North Pacific Ocean (ISC), 13-18 July, 2016, Sapporo, Japan. Document should not be cited without permission of the authors.

ISC Organizational Chart (July 2016)

ISC/16/PLENARY/03



Membership Key:

1 Canada 2 China 3 Chinese-Taipei 4 Korea 5 Japan 6 Mexico 7 USA 8 PICES 9 SPC 10 IATTC 11 FAO 12 WCPFC
VC Vice Chair DM Database Manager

This is not a comprehensive list but the main points of contact.